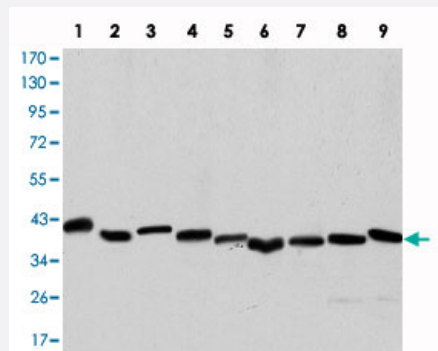


ACTA2 monoclonal antibody, clone 4A4

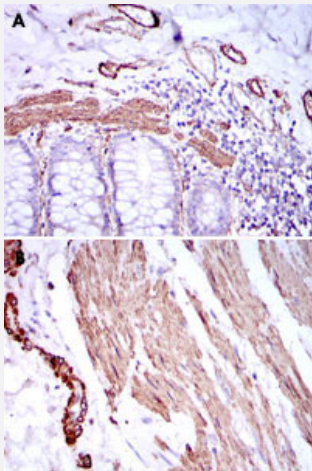
Catalog # MAB10482 Size 100 uL

Applications



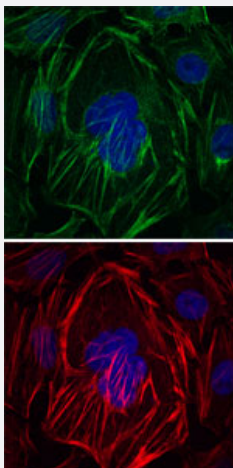
Western Blot (Cell lysate)

Western blot analysis using ACTA2 monoclonal antibody, clone 4A4 (Cat # MAB10482) against HeLa (1), A-431 (2), Jurkat (3), K-562 (4), HEK293 (5), HepG2 (6), NIH/3T3 (7), PC-12 (8) and COS-7 (9) cell lysate.



Immunohistochemistry (Formalin/PFA-fixed paraffin-embedded sections)

Immunohistochemical analysis of paraffin-embedded human duodenum tissues (A) and human esophagus tissues (B) using ACTA2 monoclonal antibody, clone 4A4 (Cat # MAB10482) with DAB staining.

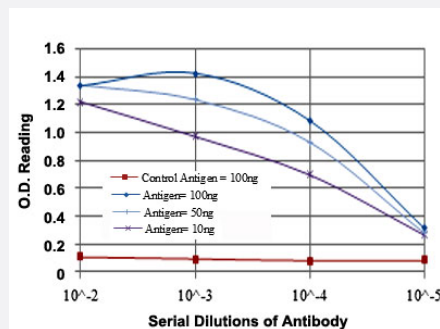


Immunofluorescence

Immunofluorescence analysis of HepG2 cells using ACTA2 monoclonal antibody, clone 4A4 (Cat # MAB10482) (green). Red: Actin filaments have been labeled with Alexa Fluor-555 phalloidin. Blue: DRAQ5 fluorescent DNA dye.

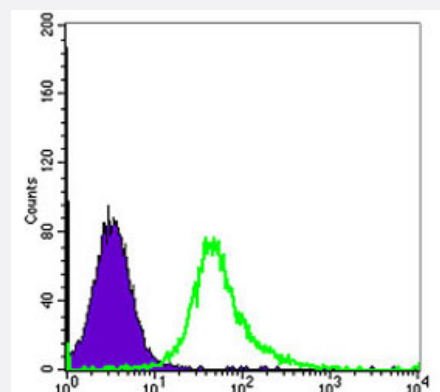
Enzyme-linked Immunoabsorbent Assay

ELISA detection with ACTA2 monoclonal antibody, clone 4A4 (Cat # MAB10482).



Flow Cytometry

Flow cytometric analysis of HeLa cells using ACTA2 monoclonal antibody, clone 4A4 (Cat # MAB10482) (green) and negative control (purple).



Specification

Product Description Mouse monoclonal antibody raised against synthetic peptide of ACTA2.

Immunogen A synthetic peptide corresponding to human ACTA2.

Host Mouse

Theoretical MW (kDa) 42

Reactivity Human, Monkey, Mouse, Rat

Form Liquid

Isotype IgG1

Recommend Usage

- ELISA (1:10000)
- Western Blot (1:500-1:2000)
- Immunohistochemistry (1:200-1:1000)
- Immunofluorescence (1:200-1:1000)
- Flow cytometry (1:200-1:400)
- The optimal working dilution should be determined by the end user.

Storage Buffer In ascites (0.03% sodium azide)

Storage Instruction

Store at 4°C. For long term storage store at -20°C.
Aliquot to avoid repeated freezing and thawing.

Note

This product contains sodium azide: a POISONOUS AND HAZARDOUS SUBSTANCE which should be handled by trained staff only.

Applications

- Western Blot (Cell lysate)

Western blot analysis using ACTA2 monoclonal antibody, clone 4A4 (Cat # MAB10482) against HeLa (1), A-431 (2), Jurkat (3), K-562 (4), HEK293 (5), HepG2 (6), NIH/3T3 (7), PC-12 (8) and COS-7 (9) cell lysate.

- Immunohistochemistry (Formalin/PFA-fixed paraffin-embedded sections)

Immunohistochemical analysis of paraffin-embedded human duodenum tissues (A) and human esophagus tissues (B) using ACTA2 monoclonal antibody, clone 4A4 (Cat # MAB10482) with DAB staining.

- Immunofluorescence

Immunofluorescence analysis of HepG2 cells using ACTA2 monoclonal antibody, clone 4A4 (Cat # MAB10482) (green). Red: Actin filaments have been labeled with Alexa Fluor-555 phalloidin. Blue: DRAQ5 fluorescent DNA dye.

- Enzyme-linked Immunoabsorbent Assay

ELISA detection with ACTA2 monoclonal antibody, clone 4A4 (Cat # MAB10482).

- Flow Cytometry

Flow cytometric analysis of HeLa cells using ACTA2 monoclonal antibody, clone 4A4 (Cat # MAB10482) (green) and negative control (purple).

Gene Info — ACTA2

Entrez GeneID[59](#)**Gene Name**

ACTA2

Gene Alias

AAT6, ACTSA

Gene Description

actin, alpha 2, smooth muscle, aorta

Omim ID[102620](#)**Gene Ontology**[Hyperlink](#)

Gene Summary

The protein encoded by this gene belongs to the actin family of proteins, which are highly conserved proteins that play a role in cell motility, structure and integrity. Alpha, beta and gamma actin isoforms have been identified, with alpha actins being a major constituent of the contractile apparatus, while beta and gamma actins are involved in the regulation of cell motility. This actin is an alpha actin that is found in skeletal muscle. Defects in this gene cause aortic aneurysm familial thoracic type 6. Multiple alternatively spliced variants, encoding the same protein, have been identified. [provided by RefSeq]

Other Designations

OTTHUMP00000020042|alpha 2 actin|alpha-cardiac actin|growth-inhibiting gene 46

Pathway

- [Vascular smooth muscle contraction](#)

Disease

- [Alzheimer Disease](#)
- [Cardiovascular Diseases](#)
- [Diabetes Mellitus](#)
- [Edema](#)
- [Genetic Predisposition to Disease](#)