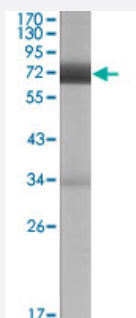


CER1 monoclonal antibody, clone 5C6

Catalog # MAB10471 Size 100 uL

Applications



Western Blot (Transfected lysate)

Western blot analysis using CER1 monoclonal antibody, clone 5C6 (Cat # MAB10471) against CER1 (aa18-267)-hlgGfC transfected HEK293 cell lysate (1).

Specification

Product Description	Mouse monoclonal antibody raised against recombinant CER1.
Immunogen	Recombinant protein corresponding to human CER1.
Host	Mouse
Theoretical MW (kDa)	30
Reactivity	Human
Form	Liquid
Isotype	IgG1
Recommend Usage	Western Blot (1:500-1:2000) ELISA (1:10000) The optimal working dilution should be determined by the end user.
Storage Buffer	In ascitic (0.03% sodium azide)
Storage Instruction	Store at 4°C. For long term storage store at -20°C. Aliquot to avoid repeated freezing and thawing.

Note

This product contains sodium azide: a POISONOUS AND HAZARDOUS SUBSTANCE which should be handled by trained staff only.

Applications

- Western Blot (Transfected lysate)

Western blot analysis using CER1 monoclonal antibody, clone 5C6 (Cat # MAB10471) against CER1 (aa18-267)-hlgGFc transfected HEK293 cell lysate (1).

- Enzyme-linked Immunoabsorbent Assay

Gene Info — CER1

Entrez GeneID	9350
Gene Name	CER1
Gene Alias	DAND4, MGC119894, MGC119895, MGC96951
Gene Description	cerberus 1, cysteine knot superfamily, homolog (Xenopus laevis)
Omim ID	603777
Gene Ontology	Hyperlink
Gene Summary	This gene encodes a cytokine member of the cysteine knot superfamily, characterized by nine conserved cysteines and a cysteine knot region. The cerberus-related cytokines, together with Dan and DRM/Gremlin, represent a group of bone morphogenetic protein (BMP) antagonists that can bind directly to BMPs and inhibit their activity. [provided by RefSeq]
Other Designations	OTTHUMP00000022757 cerberus 1 cerberus-related 1

Pathway

- [Wnt signaling pathway](#)

Disease

- [Fractures](#)
- [Genetic Predisposition to Disease](#)

- [Lung Neoplasms](#)
- [Pulmonary Disease](#)