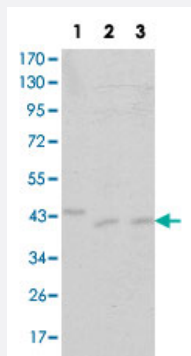


# CDK9 monoclonal antibody, clone 1B5D10

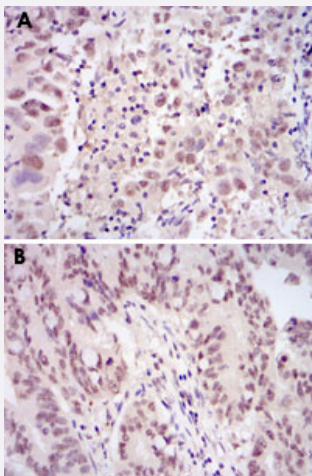
Catalog # MAB10468      Size 100 uL

## Applications



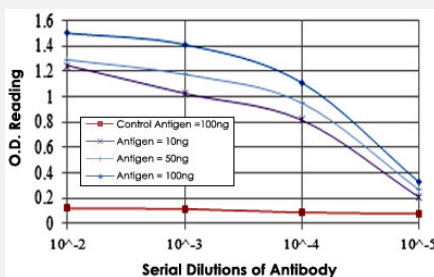
### Western Blot (Cell lysate)

Western blot analysis of CDK9 monoclonal antibody, clone 1B5D10 (Cat # MAB10468) against Jurkat (1), A-431 (2) and HEK293 (3) cell lysate.



### Immunohistochemistry (Formalin/PFA-fixed paraffin-embedded sections)

Immunohistochemical analysis of paraffin-embedded human endometrial cancer tissue (A) and rectum cancer tissue (B) using CDK9 monoclonal antibody, clone 1B5D10 (Cat # MAB10468) with DAB staining.



### Enzyme-linked Immunoabsorbent Assay

ELISA measurement of CDK9 monoclonal antibody, clone 1B5D10 (Cat # MAB10468).

## Specification

Product Description	Mouse monoclonal antibody raised against recombinant CDK9.
Immunogen	Recombinant protein corresponding to human CDK9.
Host	Mouse
Theoretical MW (kDa)	43
Reactivity	Human
Form	Liquid
Isotype	IgG1
Recommend Usage	Western Blot (1:500-1:2000) Immunohistochemistry (1:200-1:1000) ELISA (1:10000) The optimal working dilution should be determined by the end user.
Storage Buffer	In ascitic (0.03% sodium azide)
Storage Instruction	Store at 4°C. For long term storage store at -20°C. Aliquot to avoid repeated freezing and thawing.
Note	This product contains sodium azide: a POISONOUS AND HAZARDOUS SUBSTANCE which should be handled by trained staff only.

## Applications

- Western Blot (Cell lysate)

Western blot analysis of CDK9 monoclonal antibody, clone 1B5D10 (Cat # MAB10468) against Jurkat (1), A-431 (2) and HEK293 (3) cell lysate.

- Immunohistochemistry (Formalin/PFA-fixed paraffin-embedded sections)

Immunohistochemical analysis of paraffin-embedded human endometrial cancer tissue (A) and rectum cancer tissue (B) using CDK9 monoclonal antibody, clone 1B5D10 (Cat # MAB10468) with DAB staining.

- Enzyme-linked Immunoabsorbent Assay

ELISA measurement of CDK9 monoclonal antibody, clone 1B5D10 (Cat # MAB10468).

## Gene Info — CDK9

Entrez GeneID [1025](#)

Gene Name CDK9

Gene Alias	C-2k, CDC2L4, CTK1, PITALRE, TAK
Gene Description	cyclin-dependent kinase 9
Omim ID	<a href="#">603251</a>
Gene Ontology	<a href="#">Hyperlink</a>
Gene Summary	<p>The protein encoded by this gene is a member of the cyclin-dependent protein kinase (CDK) family. CDK family members are highly similar to the gene products of <i>S. cerevisiae</i> cdc28, and <i>S. pombe</i> cdc2, and known as important cell cycle regulators. This kinase was found to be a component of the multiprotein complex TAK/P-TEFb, which is an elongation factor for RNA polymerase II-directed transcription and functions by phosphorylating the C-terminal domain of the largest subunit of RNA polymerase II. This protein forms a complex with and is regulated by its regulatory subunit cyclin T or cyclin K. HIV-1 Tat protein was found to interact with this protein and cyclin T, which suggested a possible involvement of this protein in AIDS. [provided by RefSeq]</p>
Other Designations	CDC2-related kinase OTTHUMP00000022198 cell division protein kinase 9 serine/threonine protein kinase PITALRE