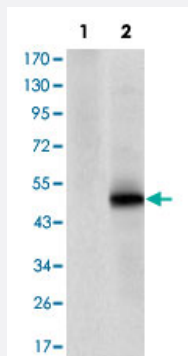


# CDK9 monoclonal antibody, clone 1B5A7

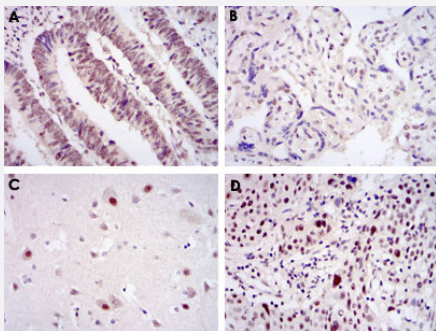
Catalog # MAB10467 Size 100 uL

## Applications



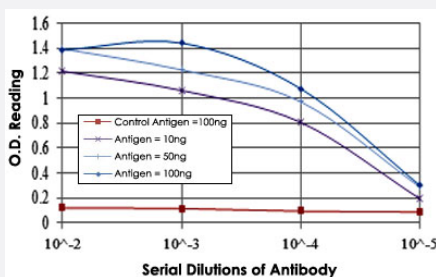
### Western Blot (Transfected lysate)

Western blot analysis using CDK9 monoclonal antibody, clone 1B5A7 (Cat # MAB10467) against HEK293 (1) and CDK9-hlgGfC transfected HEK293 (2) cell lysate.



### Immunohistochemistry (Formalin/PFA-fixed paraffin-embedded sections)

Immunohistochemical analysis of paraffin-embedded human rectum cancer tissue (A), placenta tissue (B), brain tissue (C) and esophageal cancer tissue (D) using CDK9 monoclonal antibody, clone 1B5A7 (Cat # MAB10467) with DAB staining.



### Enzyme-linked Immunoabsorbent Assay

ELISA measurement of CDK9 monoclonal antibody, clone 1B5A7 (Cat # MAB10467).

## Specification

### Product Description

Mouse monoclonal antibody raised against recombinant CDK9.

<b>Immunogen</b>	Recombinant protein corresponding to human CDK9.
<b>Host</b>	Mouse
<b>Theoretical MW (kDa)</b>	43
<b>Reactivity</b>	Human
<b>Form</b>	Liquid
<b>Isotype</b>	IgG1
<b>Recommend Usage</b>	Western Blot (1:500-1:2000) Immunohistochemistry (1:200-1:1000) ELISA (1:10000) The optimal working dilution should be determined by the end user.
<b>Storage Buffer</b>	In ascitic (0.03% sodium azide)
<b>Storage Instruction</b>	Store at 4°C. For long term storage store at -20°C. Aliquot to avoid repeated freezing and thawing.
<b>Note</b>	This product contains sodium azide: a POISONOUS AND HAZARDOUS SUBSTANCE which should be handled by trained staff only.

## Applications

- Western Blot (Transfected lysate)

Western blot analysis using CDK9 monoclonal antibody, clone 1B5A7 (Cat # MAB10467) against HEK293 (1) and CDK9-hlgGfc transfected HEK293 (2) cell lysate.

- Immunohistochemistry (Formalin/PFA-fixed paraffin-embedded sections)

Immunohistochemical analysis of paraffin-embedded human rectum cancer tissue (A), placenta tissue (B), brain tissue (C) and esophageal cancer tissue (D) using CDK9 monoclonal antibody, clone 1B5A7 (Cat # MAB10467) with DAB staining.

- Enzyme-linked Immunoabsorbent Assay

ELISA measurement of CDK9 monoclonal antibody, clone 1B5A7 (Cat # MAB10467).

## Gene Info — CDK9

<b>Entrez GeneID</b>	<a href="#">1025</a>
<b>Gene Name</b>	CDK9
<b>Gene Alias</b>	C-2k, CDC2L4, CTK1, PITALRE, TAK

Gene Description	cyclin-dependent kinase 9
Omim ID	<a href="#">603251</a>
Gene Ontology	<a href="#">Hyperlink</a>
Gene Summary	<p>The protein encoded by this gene is a member of the cyclin-dependent protein kinase (CDK) family. CDK family members are highly similar to the gene products of <i>S. cerevisiae</i> cdc28, and <i>S. pombe</i> cdc2, and known as important cell cycle regulators. This kinase was found to be a component of the multiprotein complex TAK/P-TEFb, which is an elongation factor for RNA polymerase II-directed transcription and functions by phosphorylating the C-terminal domain of the largest subunit of RNA polymerase II. This protein forms a complex with and is regulated by its regulatory subunit cyclin T or cyclin K. HIV-1 Tat protein was found to interact with this protein and cyclin T, which suggested a possible involvement of this protein in AIDS. [provided by RefSeq]</p>
Other Designations	CDC2-related kinase OTTHUMP00000022198 cell division protein kinase 9 serine/threonine protein kinase PITALRE