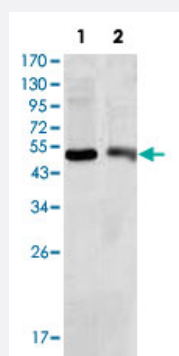


# BDH1 monoclonal antibody, clone 1A5

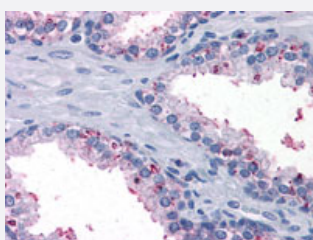
Catalog # MAB10451      Size 100 uL

## Applications



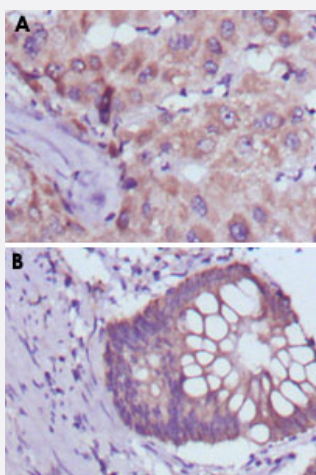
### Western Blot (Cell lysate)

Western blot analysis of BDH1 monoclonal antibody, clone 1A5 (Cat # MAB10451) against HepG2 (1) and NIH/3T3 (2) cell lysate.



### Immunohistochemistry (Formalin/PFA-fixed paraffin-embedded sections)

Immunohistochemical analysis of paraffin-embedded human prostate tissue using BDH1 monoclonal antibody, clone 1A5 (Cat # MAB10451).



### Immunohistochemistry (Formalin/PFA-fixed paraffin-embedded sections)

Immunohistochemical analysis of paraffin-embedded human liver cancer (A) and colorectal cancer tissue (B) using BDH1 monoclonal antibody, clone 1A5 (Cat # MAB10451) with DAB staining.

## Specification

<b>Product Description</b>	Mouse monoclonal antibody raised against recombinant BDH1.
<b>Immunogen</b>	Recombinant protein corresponding to human BDH1.
<b>Host</b>	Mouse
<b>Theoretical MW (kDa)</b>	38
<b>Reactivity</b>	Human, Mouse
<b>Form</b>	Liquid
<b>Isotype</b>	IgG1
<b>Recommend Usage</b>	Western Blot (1:500-1:2000) Immunohistochemistry (1:200-1:1000) ELISA (1:10000) The optimal working dilution should be determined by the end user.
<b>Storage Buffer</b>	In ascitic (0.03% sodium azide)
<b>Storage Instruction</b>	Store at 4°C. For long term storage store at -20°C. Aliquot to avoid repeated freezing and thawing.
<b>Note</b>	This product contains sodium azide: a POISONOUS AND HAZARDOUS SUBSTANCE which should be handled by trained staff only.

## Applications

- Western Blot (Cell lysate)

Western blot analysis of BDH1 monoclonal antibody, clone 1A5 (Cat # MAB10451) against HepG2 (1) and NIH/3T3 (2) cell lysate.

- Immunohistochemistry (Formalin/PFA-fixed paraffin-embedded sections)

Immunohistochemical analysis of paraffin-embedded human prostate tissue using BDH1 monoclonal antibody, clone 1A5 (Cat # MAB10451).

- Immunohistochemistry (Formalin/PFA-fixed paraffin-embedded sections)

Immunohistochemical analysis of paraffin-embedded human liver cancer (A) and colorectal cancer tissue (B) using BDH1 monoclonal antibody, clone 1A5 (Cat # MAB10451) with DAB staining.

- Enzyme-linked Immunoabsorbent Assay

## Gene Info — BDH1

Entrez GeneID	<a href="#">622</a>
Gene Name	BDH1
Gene Alias	BDH, MGC2723, MGC4347, MGC9788, SDR9C1
Gene Description	3-hydroxybutyrate dehydrogenase, type 1
Omim ID	<a href="#">603063</a>
Gene Ontology	<a href="#">Hyperlink</a>
Gene Summary	<p>This gene encodes a member of the short-chain dehydrogenase/reductase gene family. The encoded protein forms a homotetrameric lipid-requiring enzyme of the mitochondrial membrane and has a specific requirement for phosphatidylcholine for optimal enzymatic activity. The encoded protein catalyzes the interconversion of acetoacetate and (R)-3-hydroxybutyrate, the two major ketone bodies produced during fatty acid catabolism. Alternatively spliced transcript variants encoding the same protein have been described. [provided by RefSeq]</p>
Other Designations	(R)-3-hydroxybutyrate dehydrogenase 3-hydroxybutyrate dehydrogenase 3-hydroxybutyrate dehydrogenase (heart, mitochondrial) D-beta-hydroxybutyrate dehydrogenase, mitochondrial short chain dehydrogenase/reductase family 9C, member 1

## Pathway

- [Butanoate metabolism](#)
- [Metabolic pathways](#)
- [Synthesis and degradation of ketone bodies](#)