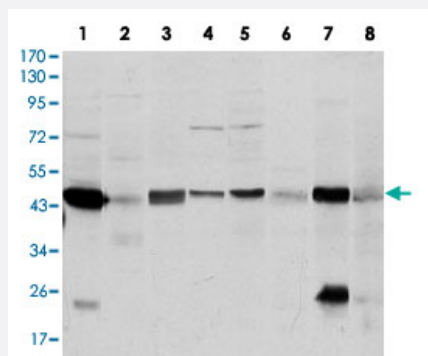


# ASS1 monoclonal antibody, clone 2C10

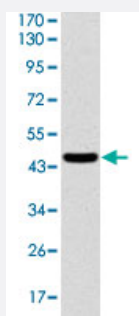
Catalog # MAB10449 Size 100 ug

## Applications



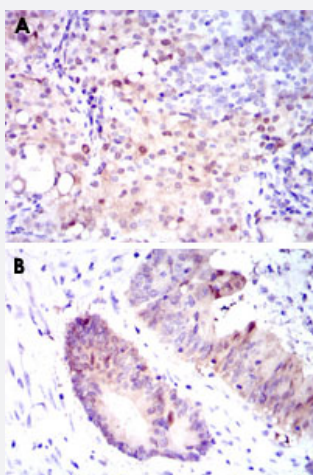
### Western Blot (Cell lysate)

Western blot analysis of ASS1 monoclonal antibody, clone 2C10 (Cat # MAB10449) against A-431 (1), RAJI (2), MOLT4 (3), Jurkat (4), A-549 (5), NIH/3T3 (6), PC-12 (7) and COS-7 (8) cell lysate.



### Western Blot (Recombinant protein)

Western blot analysis using ASS1 monoclonal antibody, clone 2C10 (Cat # MAB10449) against human ASS1 (aa 40-236) recombinant protein. (Expected MW is 47 kDa)

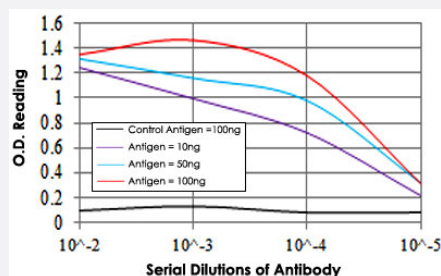


### Immunohistochemistry (Formalin/PFA-fixed paraffin-embedded sections)

Immunohistochemical analysis of paraffin-embedded human cervical cancer tissue (A) and colon cancer tissue (B) using ASS1 monoclonal antibody, clone 2C10 (Cat # MAB10449) with DAB staining.

## Enzyme-linked Immunoabsorbent Assay

ELISA measurement of ASS1 monoclonal antibody, clone 2C10 (Cat # MAB10449).



## Specification

**Product Description** Mouse monoclonal antibody raised against recombinant ASS1.

**Immunogen** Recombinant protein corresponding to human ASS1.

**Host** Mouse

**Theoretical MW (kDa)** 47

**Reactivity** Human, Monkey, Mouse

**Form** Liquid

**Isotype** IgG1

**Recommend Usage** Western Blot (1:500-1:2000)  
Immunohistochemistry (1:200-1:1000)  
ELISA (1:10000)  
The optimal working dilution should be determined by the end user.

**Storage Buffer** In PBS (0.05% sodium azide)

**Storage Instruction** Store at 4°C. For long term storage store at -20°C.  
Aliquot to avoid repeated freezing and thawing.

**Note** This product contains sodium azide: a POISONOUS AND HAZARDOUS SUBSTANCE which should be handled by trained staff only.

## Applications

- Western Blot (Cell lysate)

Western blot analysis of ASS1 monoclonal antibody, clone 2C10 (Cat # MAB10449) against A-431 (1), RAJI (2), MOLT4 (3), Jurkat (4), A-549 (5), NIH/3T3 (6), PC-12 (7) and COS-7 (8) cell lysate.

- Western Blot (Recombinant protein)

Western blot analysis using ASS1 monoclonal antibody, clone 2C10 (Cat # MAB10449) against human ASS1 (aa 40-236) recombinant protein. (Expected MW is 47 kDa)

- Immunohistochemistry (Formalin/PFA-fixed paraffin-embedded sections)

Immunohistochemical analysis of paraffin-embedded human cervical cancer tissue (A) and colon cancer tissue (B) using ASS1 monoclonal antibody, clone 2C10 (Cat # MAB10449) with DAB staining.

- Enzyme-linked Immunoabsorbent Assay

ELISA measurement of ASS1 monoclonal antibody, clone 2C10 (Cat # MAB10449).

## Gene Info — ASS1

Entrez GeneID [445](#)

Gene Name ASS1

Gene Alias ASS, CTLN1

Gene Description argininosuccinate synthetase 1

Omim ID [215700 603470](#)

Gene Ontology [Hyperlink](#)

**Gene Summary** The protein encoded by this gene catalyzes the penultimate step of the arginine biosynthetic pathway. There are approximately 10 to 14 copies of this gene including the pseudogenes scattered across the human genome, among which the one located on chromosome 9 appears to be the only functional gene for argininosuccinate synthetase. Mutations in the chromosome 9 copy of ASS cause citrullinemia. Two transcript variants encoding the same protein have been found for this gene. [provided by RefSeq]

**Other Designations** OTTHUMP00000022362|OTTHUMP00000022363|OTTHUMP00000022364|citrulline--aspartate ligase

## Pathway

- [Alanine](#)
- [Arginine and proline metabolism](#)
- [Metabolic pathways](#)

## Disease

- [Cardiovascular Diseases](#)
- [Diabetes Mellitus](#)
- [Edema](#)