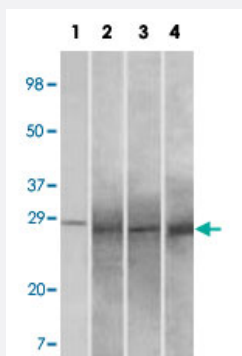


# RAB25 monoclonal antibody, clone 3F12F3

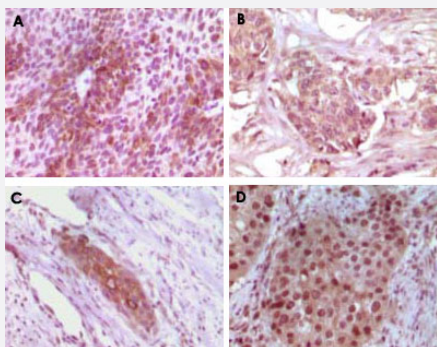
Catalog # MAB10441      Size 100 uL

## Applications



### Western Blot

Western blot analysis using RAB25 monoclonal antibody, clone 3F12F3 (Cat # MAB10441) against truncated RAB25 recombinant protein (1), human ovary carcinoma(2), stomach carcinoma (3), breast carcinoma (4) tissue lysate.



### Immunohistochemistry (Formalin/PFA-fixed paraffin-embedded sections)

Immunohistochemical analysis of paraffin-embedded human bladder carcinoma (A), breast carcinoma (B), esophagus carcinoma (C), skin carcinoma (D) tissue, showing cytoplasmic localization using RAB25 monoclonal antibody, clone 3F12F3 (Cat # MAB10441) with DAB staining.

## Specification

<b>Product Description</b>	Mouse monoclonal antibody raised against recombinant RAB25.
<b>Immunogen</b>	Recombinant protein corresponding to human RAB25.
<b>Host</b>	Mouse
<b>Reactivity</b>	Human
<b>Form</b>	Liquid
<b>Isotype</b>	IgG2a

<b>Recommend Usage</b>	Western Blot (1:500-1:2000) Immunohistochemistry (1:200-1:1000) ELISA (1:10000) The optimal working dilution should be determined by the end user.
<b>Storage Buffer</b>	In PBS (0.03% sodium azide)
<b>Storage Instruction</b>	Store at 4°C. For long term storage store at -20°C. Aliquot to avoid repeated freezing and thawing.
<b>Note</b>	This product contains sodium azide: a POISONOUS AND HAZARDOUS SUBSTANCE which should be handled by trained staff only.

## Applications

- Western Blot

Western blot analysis using RAB25 monoclonal antibody, clone 3F12F3 (Cat # MAB10441) against truncated RAB25 recombinant protein (1), human ovary carcinoma(2), stomach carcinoma (3), breast carcinoma (4) tissue lysate.

- Immunohistochemistry (Formalin/PFA-fixed paraffin-embedded sections)

Immunohistochemical analysis of paraffin-embedded human bladder carcinoma (A), breast carcinoma (B), esophagus carcinoma (C), skin carcinoma (D) tissue, showing cytoplasmic localization using RAB25 monoclonal antibody, clone 3F12F3 (Cat # MAB10441) with DAB staining.

- Enzyme-linked Immunoabsorbent Assay

## Gene Info — RAB25

<b>Entrez GeneID</b>	<a href="#">57111</a>
<b>Gene Name</b>	RAB25
<b>Gene Alias</b>	CATX-8
<b>Gene Description</b>	RAB25, member RAS oncogene family
<b>Gene Ontology</b>	<a href="#">Hyperlink</a>
<b>Gene Summary</b>	RAB proteins, such as RAB25, are members of the RAS superfamily of small GTPases that are involved in membrane trafficking. Members of the RAB11 subfamily, including RAB25, control the return of internalized membrane-associated moieties to the cell surface (Caswell et al., 2007 [PubMed 17925226]).[supplied by OMIM]
<b>Other Designations</b>	OTTHUMP00000018847

## Publication Reference

- [High RAB25 expression is associated with good clinical outcome in patients with locally advanced head and neck squamous cell carcinoma.](#)

Téllez-Gabriel M, Arroyo-Solera I, León X, Gallardo A, López M, Céspedes MV, Casanova I, López-Pousa A, Quer M, Mangues MA, Barnadas A, Mangues R, Pavón MA.

Cancer Medicine 2013 Dec; 2(6):950.

Application: IHC-P, Human, Head and neck squamous cell carcinoma