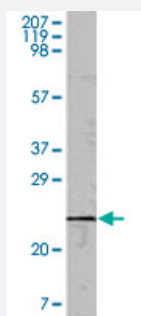


EIF4EBP1 monoclonal antibody, clone 11G12C11

Catalog # MAB10437

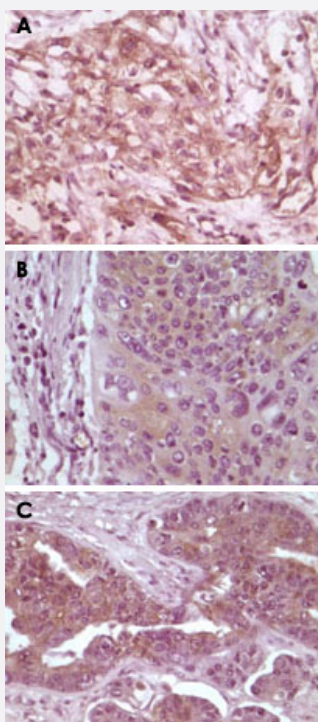
Size 100 uL

Applications



Western Blot (Recombinant protein)

Western blot analysis using EIF4EBP1 monoclonal antibody, clone 11G12C11 (Cat # MAB10437) against truncated EIF4EBP1 recombinant protein (1).



Immunohistochemistry (Formalin/PFA-fixed paraffin-embedded sections)

Immunohistochemical analysis of paraffin-embedded human pancreas carcinoma (A), esophagus carcinoma tissue (B) and ovary tumor tissue, showing cytoplasmic and membrane localization using EIF4EBP1 monoclonal antibody, clone 11G12C11 (Cat # MAB10437) with DAB staining.

Specification

Product Description

Mouse monoclonal antibody raised against recombinant EIF4EBP1.

Immunogen

Recombinant protein corresponding to human EIF4EBP1.

Host	Mouse
Reactivity	Human
Form	Liquid
Isotype	IgG1
Recommend Usage	Immunohistochemistry (1:200-1:1000) Immunofluorescence (1:200-1:1000) ELISA (1:10000) The optimal working dilution should be determined by the end user.
Storage Buffer	In PBS (0.03% sodium azide)
Storage Instruction	Store at 4°C. For long term storage store at -20°C. Aliquot to avoid repeated freezing and thawing.
Note	This product contains sodium azide: a POISONOUS AND HAZARDOUS SUBSTANCE which should be handled by trained staff only.

Applications

- Western Blot (Recombinant protein)

Western blot analysis using EIF4EBP1 monoclonal antibody, clone 11G12C11 (Cat # MAB10437) against truncated EIF4EBP1 recombinant protein (1).

- Immunohistochemistry (Formalin/PFA-fixed paraffin-embedded sections)

Immunohistochemical analysis of paraffin-embedded human pancreas carcinoma (A), esophagus carcinoma tissue (B) and ovary tumor tissue, showing cytoplasmic and membrane localization using EIF4EBP1 monoclonal antibody, clone 11G12C11 (Cat # MAB10437) with DAB staining.

- Immunofluorescence

- Enzyme-linked Immunoabsorbent Assay

Gene Info — EIF4EBP1

Entrez GeneID	1978
Gene Name	EIF4EBP1
Gene Alias	4E-BP1, 4EBP1, BP-1, MGC4316, PHAS-I

Gene Description	eukaryotic translation initiation factor 4E binding protein 1
Omim ID	602223
Gene Ontology	Hyperlink
Gene Summary	<p>This gene encodes one member of a family of translation repressor proteins. The protein directly interacts with eukaryotic translation initiation factor 4E (eIF4E), which is a limiting component of the multisubunit complex that recruits 40S ribosomal subunits to the 5' end of mRNAs. Interaction of this protein with eIF4E inhibits complex assembly and represses translation. This protein is phosphorylated in response to various signals including UV irradiation and insulin signaling, resulting in its dissociation from eIF4E and activation of mRNA translation. [provided by RefSeq]</p>
Other Designations	eIF4E-binding protein 1 phosphorylated heat- and acid-stable protein regulated by insulin 1

Pathway

- [Acute myeloid leukemia](#)
- [ErbB signaling pathway](#)
- [Insulin signaling pathway](#)
- [mTOR signaling pathway](#)

Disease

- [Alzheimer disease](#)
- [Genetic Predisposition to Disease](#)
- [Multiple System Atrophy](#)
- [Obesity](#)