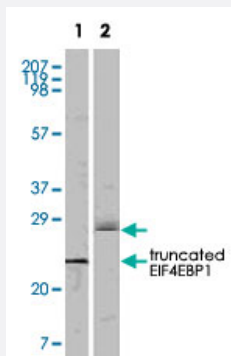


EIF4EBP1 monoclonal antibody, clone 4B6G10

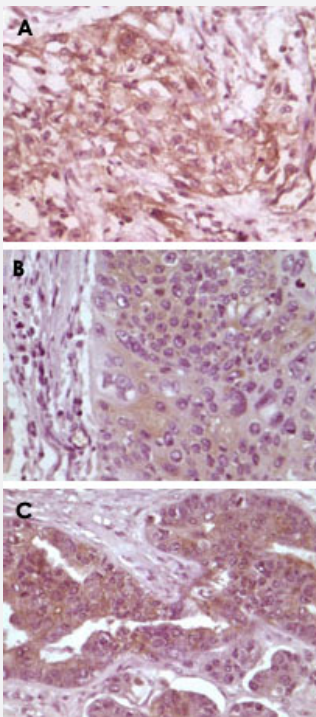
Catalog # MAB10436 Size 100 uL

Applications



Western Blot

Western blot analysis using EIF4EBP1 monoclonal antibody, clone 4B6G10 (Cat # MAB10436) against truncated EIF4EBP1 recombinant protein (1) and A-431 cell lysate (2).



Immunohistochemistry (Formalin/PFA-fixed paraffin-embedded sections)

Immunohistochemical analysis of paraffin-embedded human pancreas carcinoma (A), esophagus carcinoma tissue (B) and ovary tumor tissue (C), showing cytoplasmic and membrane localization using EIF4EBP1 monoclonal antibody, clone 4B6G10 (Cat # MAB10436) with DAB staining.

Specification

Product Description

Mouse monoclonal antibody raised against recombinant EIF4EBP1.

Immunogen	Recombinant protein corresponding to human EIF4EBP1.
Host	Mouse
Reactivity	Human
Form	Liquid
Isotype	IgG1
Recommend Usage	Western Blot (1:500-1:2000) Immunohistochemistry (1:200-1:1000) ELISA (1:10000) The optimal working dilution should be determined by the end user.
Storage Buffer	In ascitic (0.03% sodium azide)
Storage Instruction	Store at 4°C. For long term storage store at -20°C. Aliquot to avoid repeated freezing and thawing.
Note	This product contains sodium azide: a POISONOUS AND HAZARDOUS SUBSTANCE which should be handled by trained staff only.

Applications

- Western Blot

Western blot analysis using EIF4EBP1 monoclonal antibody, clone 4B6G10 (Cat # MAB10436) against truncated EIF4EBP1 recombinant protein (1) and A-431 cell lysate (2).

- Immunohistochemistry (Formalin/PFA-fixed paraffin-embedded sections)

Immunohistochemical analysis of paraffin-embedded human pancreas carcinoma (A), esophagus carcinoma tissue (B) and ovary tumor tissue (C), showing cytoplasmic and membrane localization using EIF4EBP1 monoclonal antibody, clone 4B6G10 (Cat # MAB10436) with DAB staining.

- Enzyme-linked Immunoabsorbent Assay

Gene Info — EIF4EBP1

Entrez GeneID	1978
Gene Name	EIF4EBP1
Gene Alias	4E-BP1, 4EBP1, BP-1, MGC4316, PHAS-I
Gene Description	eukaryotic translation initiation factor 4E binding protein 1

Omim ID [602223](#)

Gene Ontology [Hyperlink](#)

Gene Summary This gene encodes one member of a family of translation repressor proteins. The protein directly interacts with eukaryotic translation initiation factor 4E (eIF4E), which is a limiting component of the multisubunit complex that recruits 40S ribosomal subunits to the 5' end of mRNAs. Interaction of this protein with eIF4E inhibits complex assembly and represses translation. This protein is phosphorylated in response to various signals including UV irradiation and insulin signaling, resulting in its dissociation from eIF4E and activation of mRNA translation. [provided by RefSeq]

Other Designations eIF4E-binding protein 1|phosphorylated heat- and acid-stable protein regulated by insulin 1

Pathway

- [Acute myeloid leukemia](#)
- [ErbB signaling pathway](#)
- [Insulin signaling pathway](#)
- [mTOR signaling pathway](#)

Disease

- [Alzheimer disease](#)
- [Genetic Predisposition to Disease](#)
- [Multiple System Atrophy](#)
- [Obesity](#)