

TYRO3 monoclonal antibody, clone 1C10E8

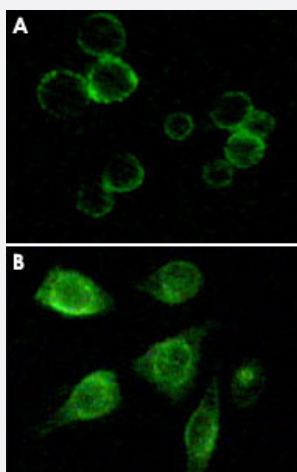
Catalog # MAB10416 Size 100 uL

Applications



Western Blot (Recombinant protein)

Western blot analysis using TYRO3 monoclonal antibody, clone 1C10E8 (Cat # MAB10416) against truncated TYRO3 recombinant protein.



Immunofluorescence

Immunofluorescence staining of methanol-fixed MCF-7 (A) and HepG2 (B) cells using TYRO3 monoclonal antibody, clone 1C10E8 (Cat # MAB10416), showing membrane and cytoplasmic localization.

Specification

Product Description	Mouse monoclonal antibody raised against recombinant TYRO3.
Immunogen	Recombinant protein corresponding to human TYRO3.
Host	Mouse
Reactivity	Human
Form	Liquid

Isotype	IgG1
Recommend Usage	ELISA (1:10000) Western Blot (1:500-1:2000) Immunohistochemistry (1:200-1:1000) The optimal working dilution should be determined by the end user.
Storage Buffer	In ascites (0.03% sodium azide)
Storage Instruction	Store at 4°C. For long term storage store at -20°C. Aliquot to avoid repeated freezing and thawing.
Note	This product contains sodium azide: a POISONOUS AND HAZARDOUS SUBSTANCE which should be handled by trained staff only.

Applications

- Western Blot (Recombinant protein)

Western blot analysis using TYRO3 monoclonal antibody, clone 1C10E8 (Cat # MAB10416) against truncated TYRO3 recombinant protein.

- Immunohistochemistry (Formalin/PFA-fixed paraffin-embedded sections)

- Immunofluorescence

Immunofluorescence staining of methanol-fixed MCF-7 (A) and HepG2 (B) cells using TYRO3 monoclonal antibody, clone 1C10E8 (Cat # MAB10416), showing membrane and cytoplasmic localization.

- Enzyme-linked Immunoabsorbent Assay

Gene Info — TYRO3

Entrez GeneID	7301
Gene Name	TYRO3
Gene Alias	BYK, Brt, Dtk, FLJ16467, RSE, Sky, Tif
Gene Description	TYRO3 protein tyrosine kinase
Omim ID	600341
Gene Ontology	Hyperlink

Other Designations

Tyro3 protein tyrosine kinase (sea-related receptor tyrosine kinase)|tyrosine-protein kinase recept
or TYRO3

Disease

- [Carotid Artery Diseases](#)
- [Genetic Predisposition to Disease](#)
- [Stroke](#)