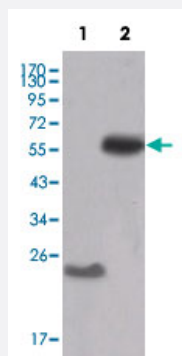


# SRC monoclonal antibody, clone 5D10C4

Catalog # MAB10412      Size 100 uL

## Applications



### Western Blot

Western blot analysis using SRC monoclonal antibody, clone 5D10C4 (Cat # MAB10412) against truncated SRC-His recombinant protein (1) and PMA treated THP-1 cell lysate (2).

## Specification

<b>Product Description</b>	Mouse monoclonal antibody raised against partial recombinant SRC.
<b>Immunogen</b>	Recombinant protein corresponding to amino acids 10-193 of human SRC.
<b>Host</b>	Mouse
<b>Reactivity</b>	Human
<b>Form</b>	Liquid
<b>Isotype</b>	IgG2a
<b>Recommend Usage</b>	ELISA (1:10000) Western Blot (1:500-1:2000) The optimal working dilution should be determined by the end user.
<b>Storage Buffer</b>	In ascites (0.03% sodium azide)
<b>Storage Instruction</b>	Store at 4°C. For long term storage store at -20°C. Aliquot to avoid repeated freezing and thawing.

## Note

This product contains sodium azide: a POISONOUS AND HAZARDOUS SUBSTANCE which should be handled by trained staff only.

## Applications

- Western Blot

Western blot analysis using SRC monoclonal antibody, clone 5D10C4 (Cat # MAB10412) against truncated SRC-His recombinant protein (1) and PMA treated THP-1 cell lysate (2).

- Enzyme-linked Immunoabsorbent Assay

## Gene Info — SRC

Entrez GeneID [6714](#)

Gene Name SRC

Gene Alias ASV, SRC1, c-SRC, p60-Src

Gene Description v-src sarcoma (Schmidt-Ruppin A-2) viral oncogene homolog (avian)

Omim ID [190090](#)

Gene Ontology [Hyperlink](#)

**Gene Summary** This gene is highly similar to the v-src gene of Rous sarcoma virus. This proto-oncogene may play a role in the regulation of embryonic development and cell growth. The protein encoded by this gene is a tyrosine-protein kinase whose activity can be inhibited by phosphorylation by c-SRC kinase. Mutations in this gene could be involved in the malignant progression of colon cancer. Two transcript variants encoding the same protein have been found for this gene. [provided by RefSeq]

**Other Designations** OTTHUMP00000174476|OTTHUMP00000174477|proto-oncogene tyrosine-protein kinase SRC|protooncogene SRC, Rous sarcoma|tyrosine kinase pp60c-src|tyrosine-protein kinase SRC-1

## Pathway

- [Adherens junction](#)
- [Endocytosis](#)
- [Epithelial cell signaling in Helicobacter pylori infection](#)
- [ErbB signaling pathway](#)

- [Focal adhesion](#)
- [Gap junction](#)
- [GnRH signaling pathway](#)
- [Tight junction](#)
- [VEGF signaling pathway](#)

## Disease

- [Genetic Predisposition to Disease](#)
- [HIV Infections](#)
- [Thyroid Neoplasms](#)