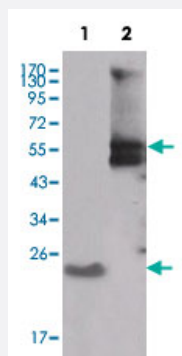


SRC monoclonal antibody, clone 4F1E8

Catalog # MAB10411 Size 100 uL

Applications



Western Blot

Western blot analysis using SRC monoclonal antibody, clone 4F1E8 (Cat # MAB10411) against truncated SRC-His recombinant protein (1) and PMA treated THP-1 cell lysate (2).

Specification

Product Description	Mouse monoclonal antibody raised against partial recombinant SRC.
Immunogen	Recombinant protein corresponding to amino acids 10-193 of human SRC.
Host	Mouse
Reactivity	Human
Form	Liquid
Isotype	IgG2b
Recommend Usage	ELISA (1:10000) Western Blot (1:500-1:2000) The optimal working dilution should be determined by the end user.
Storage Buffer	In ascites (0.03% sodium azide)
Storage Instruction	Store at 4°C. For long term storage store at -20°C. Aliquot to avoid repeated freezing and thawing.

Note

This product contains sodium azide: a POISONOUS AND HAZARDOUS SUBSTANCE which should be handled by trained staff only.

Applications

- Western Blot

Western blot analysis using SRC monoclonal antibody, clone 4F1E8 (Cat # MAB10411) against truncated SRC-His recombinant protein (1) and PMA treated THP-1 cell lysate (2).

- Enzyme-linked Immunoabsorbent Assay

Gene Info — SRC

Entrez GeneID [6714](#)

Gene Name SRC

Gene Alias ASV, SRC1, c-SRC, p60-Src

Gene Description v-src sarcoma (Schmidt-Ruppin A-2) viral oncogene homolog (avian)

Omim ID [190090](#)

Gene Ontology [Hyperlink](#)

Gene Summary This gene is highly similar to the v-src gene of Rous sarcoma virus. This proto-oncogene may play a role in the regulation of embryonic development and cell growth. The protein encoded by this gene is a tyrosine-protein kinase whose activity can be inhibited by phosphorylation by c-SRC kinase. Mutations in this gene could be involved in the malignant progression of colon cancer. Two transcript variants encoding the same protein have been found for this gene. [provided by RefSeq]

Other Designations OTTHUMP00000174476|OTTHUMP00000174477|proto-oncogene tyrosine-protein kinase SRC|protooncogene SRC, Rous sarcoma|tyrosine kinase pp60c-src|tyrosine-protein kinase SRC-1

Pathway

- [Adherens junction](#)
- [Endocytosis](#)
- [Epithelial cell signaling in Helicobacter pylori infection](#)
- [ErbB signaling pathway](#)

- [Focal adhesion](#)
- [Gap junction](#)
- [GnRH signaling pathway](#)
- [Tight junction](#)
- [VEGF signaling pathway](#)

Disease

- [Genetic Predisposition to Disease](#)
- [HIV Infections](#)
- [Thyroid Neoplasms](#)