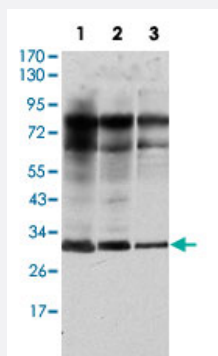


RAB25 monoclonal antibody, clone 3F12

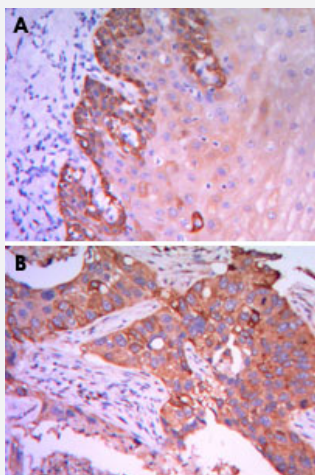
Catalog # MAB10406 Size 100 uL

Applications



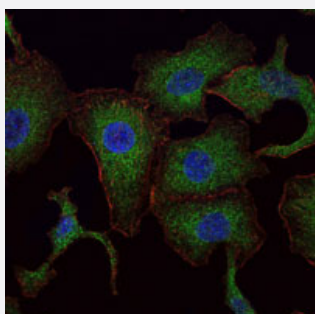
Western Blot (Cell lysate)

Western blot analysis of RAB25 monoclonal antibody, clone 3F12 (Cat # MAB10406) against MCF-7 (1), T47D (2) and GC7901 (3) cell lysate.



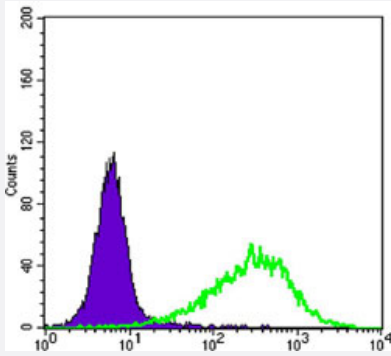
Immunohistochemistry (Formalin/PFA-fixed paraffin-embedded sections)

Immunohistochemical analysis of paraffin-embedded human esophagus tissue (A) and human lung cancer (B) using RAB25 monoclonal antibody, clone 3F12 (Cat # MAB10406) with DAB staining.



Immunofluorescence

Immunofluorescence analysis of A-549 cells using RAB25 monoclonal antibody, clone 3F12 (Cat # MAB10406) (green). Blue: DRAQ5 fluorescent DNA dye. Red: Actin filaments have been labeled with Alexa Fluor-555 phalloidin.



Flow Cytometry

Flow cytometric analysis of NIH/3T3 cells using RAB25 monoclonal antibody, clone 3F12 (Cat # MAB10406) (green) and negative control (purple).

Specification

Product Description	Mouse monoclonal antibody raised against recombinant RAB25.
Immunogen	Recombinant protein corresponding to human RAB25.
Host	Mouse
Theoretical MW (kDa)	24
Reactivity	Human, Mouse
Form	Liquid
Isotype	IgG1
Recommend Usage	ELISA (1:10000) Western Blot (1:500-1:2000) Immunohistochemistry (1:200-1:1000) Immunofluorescence (1:200-1:1000) Flow cytometry (1:200-1:400) The optimal working dilution should be determined by the end user.
Storage Buffer	In ascites (0.03% sodium azide)
Storage Instruction	Store at 4°C. For long term storage store at -20°C. Aliquot to avoid repeated freezing and thawing.
Note	This product contains sodium azide: a POISONOUS AND HAZARDOUS SUBSTANCE which should be handled by trained staff only.

Applications

- Western Blot (Cell lysate)

Western blot analysis of RAB25 monoclonal antibody, clone 3F12 (Cat # MAB10406) against MCF-7 (1), T47D (2) and GC7901 (3) cell lysate.

- Immunohistochemistry (Formalin/PFA-fixed paraffin-embedded sections)

Immunohistochemical analysis of paraffin-embedded human esophagus tissue (A) and human lung cancer (B) using RAB25 monoclonal antibody, clone 3F12 (Cat # MAB10406) with DAB staining.

- Immunofluorescence

Immunofluorescence analysis of A-549 cells using RAB25 monoclonal antibody, clone 3F12 (Cat # MAB10406) (green). Blue: DRAQ5 fluorescent DNA dye. Red: Actin filaments have been labeled with Alexa Fluor-555 phalloidin.

- Enzyme-linked Immunoabsorbent Assay

- Flow Cytometry

Flow cytometric analysis of NIH/3T3 cells using RAB25 monoclonal antibody, clone 3F12 (Cat # MAB10406) (green) and negative control (purple).

Gene Info — RAB25

Entrez GeneID [57111](#)

Gene Name RAB25

Gene Alias CATX-8

Gene Description RAB25, member RAS oncogene family

Gene Ontology [Hyperlink](#)

Gene Summary RAB proteins, such as RAB25, are members of the RAS superfamily of small GTPases that are involved in membrane trafficking. Members of the RAB11 subfamily, including RAB25, control the return of internalized membrane-associated moieties to the cell surface (Caswell et al., 2007 [PubMed 17925226]).[supplied by OMIM]

Other Designations OTTHUMP00000018847