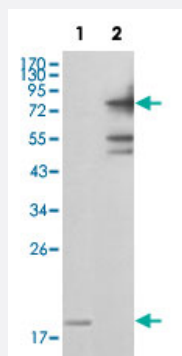


NAMPT monoclonal antibody, clone 1D3A12

Catalog # MAB10403 Size 100 uL

Applications



Western Blot

Western blot analysis using NAMPT monoclonal antibody, clone 1D3A12 (Cat # MAB10403) against truncated NAMPT-His recombinant protein (1) and full-length GFP-NAMPT(aa1-491) transfected COS-7 cell lysate (2).

Specification

Product Description	Mouse monoclonal antibody raised against partial recombinant NAMPT.
Immunogen	Recombinant protein corresponding to amino acids 338-479 of human NAMPT.
Host	Mouse
Reactivity	Human
Form	Liquid
Isotype	IgG1
Recommend Usage	ELISA (1:10000) Western Blot (1:500-1:2000) The optimal working dilution should be determined by the end user.
Storage Buffer	In ascites (0.03% sodium azide)
Storage Instruction	Store at 4°C. For long term storage store at -20°C. Aliquot to avoid repeated freezing and thawing.

Note

This product contains sodium azide: a POISONOUS AND HAZARDOUS SUBSTANCE which should be handled by trained staff only.

Applications

- Western Blot

Western blot analysis using NAMPT monoclonal antibody, clone 1D3A12 (Cat # MAB10403) against truncated NAMPT-His recombinant protein (1) and full-length GFP-NAMPT(aa1-491) transfected COS-7 cell lysate (2).

- Enzyme-linked Immunoabsorbent Assay

Gene Info — NAMPT

Entrez GeneID	10135
Gene Name	NAMPT
Gene Alias	1110035O14Rik, DKFZp666B131, MGC117256, PBEF, PBEF1, VF, VISFATIN
Gene Description	nicotinamide phosphoribosyltransferase
Omim ID	608764
Gene Ontology	Hyperlink
Gene Summary	<p>This gene encodes a protein that catalyzes the condensation of nicotinamide with 5-phosphoribosyl-1-pyrophosphate to yield nicotinamide mononucleotide, one step in the biosynthesis of nicotinamide adenine dinucleotide. The protein is an adipokine that is localized to the bloodstream and has various functions, including the promotion of vascular smooth muscle cell maturation and inhibition of neutrophil apoptosis. It also activates insulin receptor and has insulin-mimetic effects, lowering blood glucose and improving insulin sensitivity. The protein is highly expressed in visceral fat and serum levels of the protein correlate with obesity. This gene has a pseudogene on chromosome 10. [provided by RefSeq]</p>
Other Designations	NAmPRTase pre-B cell-enhancing factor pre-B-cell colony enhancing factor 1

Pathway

- [Nicotinate and nicotinamide metabolism](#)

Disease

- [Birth Weight](#)
- [Cardiovascular Diseases](#)
- [Coronary Artery Disease](#)
- [Diabetes Mellitus](#)
- [Edema](#)
- [Genetic Predisposition to Disease](#)
- [Inflammation](#)
- [Insulin Resistance](#)
- [Kidney Failure](#)
- [Obesity](#)