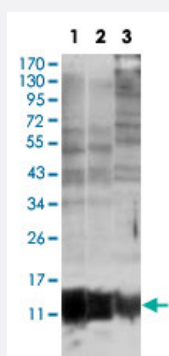


S100A10 monoclonal antibody, clone 4E7E10

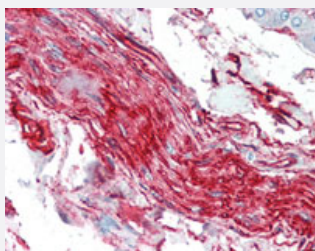
Catalog # MAB10389 Size 100 uL

Applications



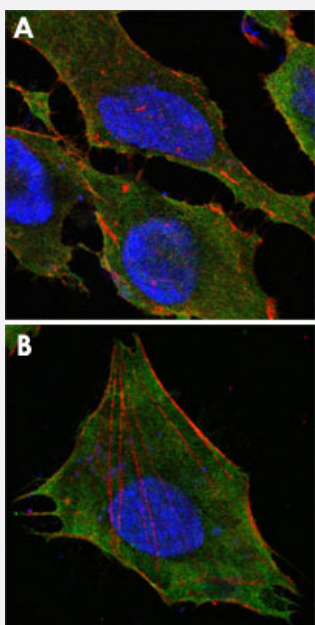
Western Blot (Cell lysate)

Western blot analysis of S100A10 monoclonal antibody, clone 4E7E10 (Cat # MAB10389) against MCF-7 (1), HepG2 (2) and HeLa (3).



Immunohistochemistry (Formalin/PFA-fixed paraffin-embedded sections)

Immunohistochemical analysis of paraffin-embedded human nerve and ganglion cells using S100A10 monoclonal antibody, clone 4E7E10 (Cat # MAB10389).



Immunofluorescence

Confocal immunofluorescence analysis of HeLa (A) and L-02 (B) cells using S100A10 monoclonal antibody, clone 4E7E10 (Cat # MAB10389) (green). Red: Actin filaments have been labeled with DY-554 phalloidin. Blue: DRAQ5 fluorescent DNA dye.

Specification

Product Description	Mouse monoclonal antibody raised against recombinant S100A10.
Immunogen	Recombinant protein corresponding to human S100A10.
Host	Mouse
Theoretical MW (kDa)	11
Reactivity	Human
Form	Liquid
Isotype	IgG1
Recommend Usage	ELISA (1:10000) Western Blot (1:500-1:2000) Immunohistochemistry (1:200-1:1000) Immunofluorescence (1:200-1:1000) The optimal working dilution should be determined by the end user.
Storage Buffer	In ascites (0.03% sodium azide)
Storage Instruction	Store at 4°C. For long term storage store at -20°C. Aliquot to avoid repeated freezing and thawing.
Note	This product contains sodium azide: a POISONOUS AND HAZARDOUS SUBSTANCE which should be handled by trained staff only.

Applications

- Western Blot (Cell lysate)

Western blot analysis of S100A10 monoclonal antibody, clone 4E7E10 (Cat # MAB10389) against MCF-7 (1), HepG2 (2) and HeLa (3).

- Immunohistochemistry (Formalin/PFA-fixed paraffin-embedded sections)

Immunohistochemical analysis of paraffin-embedded human nerve and ganglion cells using S100A10 monoclonal antibody, clone 4E7E10 (Cat # MAB10389).

- Immunofluorescence

Confocal immunofluorescence analysis of HeLa (A) and L-02 (B) cells using S100A10 monoclonal antibody, clone 4E7E10 (Cat # MAB10389) (green).

Red: Actin filaments have been labeled with DY-554 phalloidin.

Blue: DRAQ5 fluorescent DNA dye.

- Enzyme-linked Immunoabsorbent Assay

Gene Info — S100A10

Entrez GeneID	6281
Gene Name	S100A10
Gene Alias	42C, ANX2L, ANX2LG, CAL1L, CLP11, Ca[1], GP11, MGC111133, P11, p10
Gene Description	S100 calcium binding protein A10
Omim ID	114085
Gene Ontology	Hyperlink
Gene Summary	The protein encoded by this gene is a member of the S100 family of proteins containing 2 EF-hand calcium-binding motifs. S100 proteins are localized in the cytoplasm and/or nucleus of a wide range of cells, and involved in the regulation of a number of cellular processes such as cell cycle progression and differentiation. S100 genes include at least 13 members which are located as a cluster on chromosome 1q21. This protein may function in exocytosis and endocytosis. [provided by RefSeq]
Other Designations	OTTHUMP00000015269 OTTHUMP00000015270 S100 calcium binding protein A10 (annexin II ligand, calpactin I, light polypeptide (p11)) S100 calcium-binding protein A10 (annexin II ligand, calpactin I, light polypeptide (p11)) annexin II ligand, calpactin I, lig

Disease

- [Depressive Disorder](#)
- [Dermatitis](#)
- [Genetic Predisposition to Disease](#)
- [Thyroid Neoplasms](#)