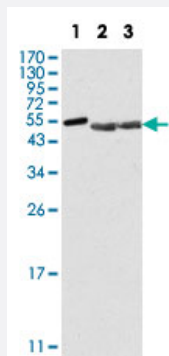


PTK6 monoclonal antibody, clone 2H12B8

Catalog # MAB10387 Size 100 uL

Applications



Western Blot (Cell lysate)

Western blot analysis of PTK6 monoclonal antibody, clone 2H12B8 (Cat # MAB10387) against HeLa (1), A-549 (2) and MCF-7 (3) cell lysate.

Specification

Product Description	Mouse monoclonal antibody raised against recombinant PTK6.
Immunogen	Recombinant protein corresponding to human PTK6.
Host	Mouse
Theoretical MW (kDa)	52
Reactivity	Human
Form	Liquid
Isotype	IgG2b
Recommend Usage	ELISA (1:10000) Western Blot (1:500-1:2000) The optimal working dilution should be determined by the end user.
Storage Buffer	In ascites (0.03% sodium azide)
Storage Instruction	Store at 4°C. For long term storage store at -20°C. Aliquot to avoid repeated freezing and thawing.

Note

This product contains sodium azide: a POISONOUS AND HAZARDOUS SUBSTANCE which should be handled by trained staff only.

Applications

- Western Blot (Cell lysate)

Western blot analysis of PTK6 monoclonal antibody, clone 2H12B8 (Cat # MAB10387) against HeLa (1), A-549 (2) and MCF-7 (3) cell lysate.

- Enzyme-linked Immunoabsorbent Assay

Gene Info — PTK6

Entrez GeneID	5753
---------------	----------------------

Gene Name	PTK6
-----------	------

Gene Alias	BRK, FLJ42088
------------	---------------

Gene Description	PTK6 protein tyrosine kinase 6
------------------	--------------------------------

Omim ID	602004
---------	------------------------

Gene Ontology	Hyperlink
---------------	---------------------------

Gene Summary	The protein encoded by this gene is a cytoplasmic nonreceptor protein kinase which may function as an intracellular signal transducer in epithelial tissues. Overexpression of this gene in mammary epithelial cells leads to sensitization of the cells to epidermal growth factor and results in a partially transformed phenotype. Expression of this gene has been detected at low levels in some breast tumors but not in normal breast tissue. The encoded protein has been shown to undergo autophosphorylation. [provided by RefSeq]
--------------	--

Other Designations	OTTHUMP00000031656 breast tumor kinase protein-tyrosine kinase BRK
--------------------	--

Disease

- [Cardiovascular Diseases](#)

- [Diabetes Mellitus](#)

- [Edema](#)