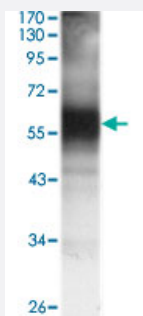


TEC monoclonal antibody, clone 3A5

Catalog # MAB10371 Size 100 uL

Applications



Western Blot (Transfected lysate)

Western blot analysis using TEC monoclonal antibody, clone 3A5 (Cat # MAB10371) against TEC (aa 90-240)-hIgGFc transfected HEK293 cell lysate.

Specification

Product Description	Mouse monoclonal antibody raised against recombinant TEC.
Immunogen	Recombinant protein corresponding to human TEC.
Host	Mouse
Theoretical MW (kDa)	74
Reactivity	Human
Form	Liquid
Isotype	IgG1
Recommend Usage	ELISA (1:10000) Western Blot (1:500-1:2000) The optimal working dilution should be determined by the end user.
Storage Buffer	In ascites (0.03% sodium azide)
Storage Instruction	Store at 4°C. For long term storage store at -20°C. Aliquot to avoid repeated freezing and thawing.

Note

This product contains sodium azide: a POISONOUS AND HAZARDOUS SUBSTANCE which should be handled by trained staff only.

Applications

- Western Blot (Transfected lysate)

Western blot analysis using TEC monoclonal antibody, clone 3A5 (Cat # MAB10371) against TEC (aa 90-240)-hlgGFc transfected HEK293 cell lysate.

- Enzyme-linked Immunoabsorbent Assay

Gene Info — TEC

Entrez GeneID [7006](#)

Gene Name TEC

Gene Alias MGC126760, MGC126762, PSCTK4

Gene Description tec protein tyrosine kinase

Omim ID [600583](#)

Gene Ontology [Hyperlink](#)

Gene Summary The protein encoded by this gene belongs to the Tec family of non-receptor protein-tyrosine kinases containing a pleckstrin homology domain. Tec family kinases are involved in the intracellular signaling mechanisms of cytokine receptors, lymphocyte surface antigens, heterotrimeric G-protein coupled receptors, and integrin molecules. They are also key players in the regulation of the immune functions. Tec kinase is an integral component of T cell signaling and has a distinct role in T cell activation. This gene may be associated with myelodysplastic syndrome. [provided by RefSeq]

Other Designations OTTHUMP00000158787

Pathway

- [T cell receptor signaling pathway](#)

Disease

- [Cardiovascular Diseases](#)

- [Diabetes Mellitus](#)
- [Edema](#)
- [Lymphedema](#)