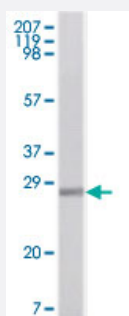


S100A1 monoclonal antibody, clone 2C8B8

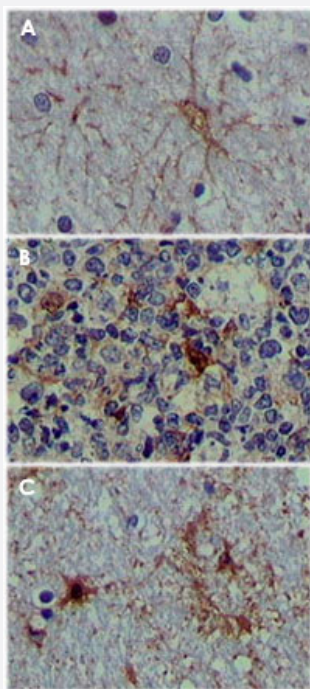
Catalog # MAB10365 Size 100 uL

Applications



Western Blot (Recombinant protein)

Western blot analysis using S100A1 monoclonal antibody, clone 2C8B8 (Cat # MAB10365) against recombinant human S100A1 protein.



Immunohistochemistry (Formalin/PFA-fixed paraffin-embedded sections)

Immunohistochemical analysis of paraffin-embedded human brain tissue (A), lymphoid follicles tissue (B) and interbrain tissue (C), showing cytoplasmic localization. using S100A1 monoclonal antibody, clone 2C8B8 (Cat # MAB10365) with DAB staining.

Specification

Product Description Mouse monoclonal antibody raised against recombinant S100A1.

Immunogen Recombinant protein corresponding to human S100A1.

Host	Mouse
Reactivity	Human
Form	Liquid
Isotype	IgG1
Recommend Usage	ELISA (1:10000) Western Blot (1:500-1:2000) Immunohistochemistry (1:200-1:1000) The optimal working dilution should be determined by the end user.
Storage Buffer	In ascites (0.03% sodium azide)
Storage Instruction	Store at 4°C. For long term storage store at -20°C. Aliquot to avoid repeated freezing and thawing.
Note	This product contains sodium azide: a POISONOUS AND HAZARDOUS SUBSTANCE which should be handled by trained staff only.

Applications

- Western Blot (Recombinant protein)

Western blot analysis using S100A1 monoclonal antibody, clone 2C8B8 (Cat # MAB10365) against recombinant human S100A1 protein.

- Immunohistochemistry (Formalin/PFA-fixed paraffin-embedded sections)

Immunohistochemical analysis of paraffin-embedded human brain tissue (A), lymphoid follicles tissue (B) and interbrain tissue (C), showing cytoplasmic localization. using S100A1 monoclonal antibody, clone 2C8B8 (Cat # MAB10365) with DAB staining.

- Enzyme-linked Immunoabsorbent Assay

Gene Info — S100A1

Entrez GeneID	6271
Gene Name	S100A1
Gene Alias	S100, S100-alpha, S100A
Gene Description	S100 calcium binding protein A1
Omim ID	176940

Gene Ontology

[Hyperlink](#)

Gene Summary

The protein encoded by this gene is a member of the S100 family of proteins containing 2 EF-hand calcium-binding motifs. S100 proteins are localized in the cytoplasm and/or nucleus of a wide range of cells, and involved in the regulation of a number of cellular processes such as cell cycle progression and differentiation. S100 genes include at least 13 members which are located as a cluster on chromosome 1q21. This protein may function in stimulation of Ca²⁺-induced Ca²⁺ release, inhibition of microtubule assembly, and inhibition of protein kinase C-mediated phosphorylation. Reduced expression of this protein has been implicated in cardiomyopathies. [provided by RefSeq]

Other Designations

OTTHUMP00000035100|S100 alpha|S100 calcium-binding protein A1|S100 protein, alpha polypeptide

Disease

- [Breast cancer](#)
- [Breast Neoplasms](#)
- [Dermatitis](#)
- [DNA Damage](#)
- [Genetic Predisposition to Disease](#)