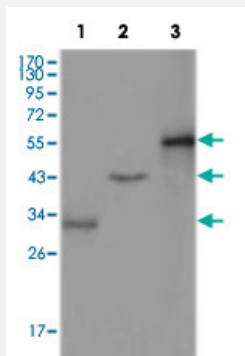


PEG10 monoclonal antibody, clone 1B1C4

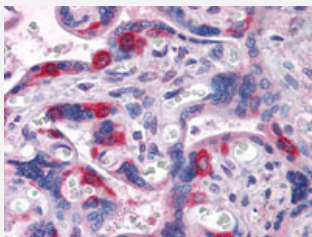
Catalog # MAB10356 Size 100 uL

Applications



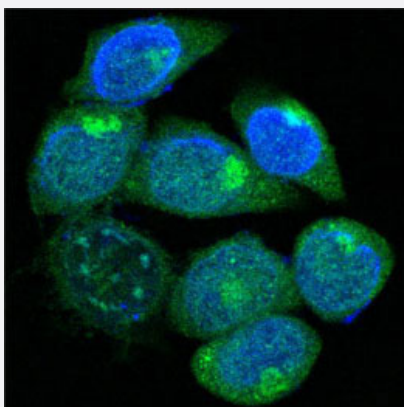
Western Blot

Western blot analysis using PEG10 monoclonal antibody, clone 1B1C4 (Cat # MAB10356) against truncated Trx-PEG10 recombinant protein (1), truncated GST-PEG10 (aa 1-120) recombinant protein (2) and full-length PEG10 (aa 1-325)-hlgGFc transfected CHO-K1 cell lysate (3).



Immunohistochemistry (Formalin/PFA-fixed paraffin-embedded sections)

Immunohistochemical analysis of paraffin-embedded human placenta tissue using PEG10 monoclonal antibody, clone 1B1C4 (Cat # MAB10356) with DAB staining.



Immunofluorescence

Confocal immunofluorescence analysis of HepG2 cells using PEG10 monoclonal antibody, clone 1B1C4 (Cat # MAB10356) (green), showing cytoplasmic localization. Blue: DRAQ5 fluorescent DNA dye.

Specification

Product Description	Mouse monoclonal antibody raised against partial recombinant PEG10.
Immunogen	Recombinant protein corresponding to amino acids 1-120 of human PEG10.
Host	Mouse
Reactivity	Human
Form	Liquid
Isotype	IgG1
Recommend Usage	ELISA (1:10000) Western Blot (1:500-1:2000) Immunohistochemistry (1:200-1:1000) Immunofluorescence (1:200-1:1000) The optimal working dilution should be determined by the end user.
Storage Buffer	In ascites (0.03% sodium azide)
Storage Instruction	Store at 4°C. For long term storage store at -20°C. Aliquot to avoid repeated freezing and thawing.
Note	This product contains sodium azide: a POISONOUS AND HAZARDOUS SUBSTANCE which should be handled by trained staff only.

Applications

- Western Blot

Western blot analysis using PEG10 monoclonal antibody, clone 1B1C4 (Cat # MAB10356) against truncated Trx-PEG10 recombinant protein (1), truncated GST-PEG10 (aa 1-120) recombinant protein (2) and full-length PEG10 (aa 1-325)-hlgGfc transfected CHO-K1 cell lysate (3).

- Immunohistochemistry (Formalin/PFA-fixed paraffin-embedded sections)

Immunohistochemical analysis of paraffin-embedded human placenta tissue using PEG10 monoclonal antibody, clone 1B1C4 (Cat # MAB10356) with DAB staining.

- Immunofluorescence

Confocal immunofluorescence analysis of HepG2 cells using PEG10 monoclonal antibody, clone 1B1C4 (Cat # MAB10356) (green), showing cytoplasmic localization. Blue: DRAQ5 fluorescent DNA dye.

- Enzyme-linked Immunoabsorbent Assay

Gene Info — PEG10

Entrez GeneID	23089
Gene Name	PEG10
Gene Alias	Edr, HB-1, KIAA1051, MEF3L, Mar2, Mart2, RGAG3
Gene Description	paternally expressed 10
Omim ID	609810
Gene Ontology	Hyperlink
Gene Summary	<p>This gene includes two overlapping reading frames of the same transcript encoding distinct isoforms. The shorter isoform has a CCHC-type zinc finger motif containing a sequence characteristic of gag proteins of most retroviruses and some retrotransposons, and it functions in part by interacting with members of the TGF-beta receptor family. The longer isoform has the active-site DSG consensus sequence of the protease domain of pol proteins. The longer isoform is the result of -1 translational frameshifting that is also seen in some retroviruses. Expression of these two isoforms only comes from the paternal allele due to imprinting. Increased gene expression (as observed by an increase in mRNA levels) is associated with hepatocellular carcinomas. [provided by RefSeq]</p>
Other Designations	MEF3 like 1 embryonal carcinoma differentiation regulated retrotransposon gag domain containing 3