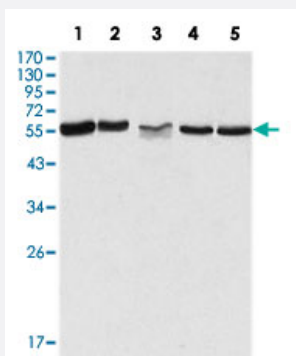


# PAK2 monoclonal antibody, clone 3B5

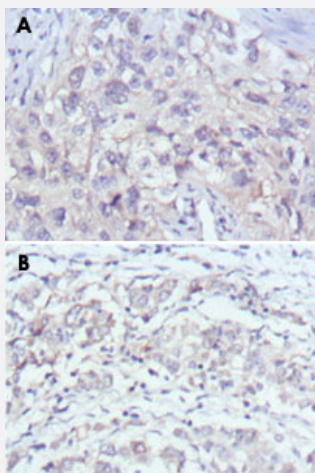
Catalog # MAB10355      Size 100 uL

## Applications



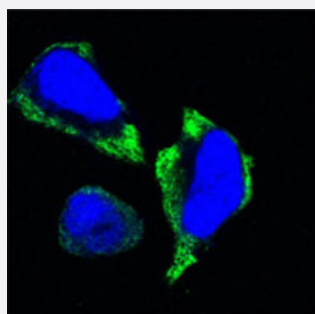
### Western Blot (Cell lysate)

Western blot analysis using PAK2 monoclonal antibody, clone 3B5 (Cat # MAB10355) against HeLa (1), Jurkat (2), A-549 (3), HEK293 (4) and K-562 (5) cell lysate.



### Immunohistochemistry (Formalin/PFA-fixed paraffin-embedded sections)

Immunohistochemical analysis of paraffin-embedded human lung cancer (A) and gastric cancer (B) using PAK2 monoclonal antibody, clone 3B5 (Cat # MAB10355) with DAB staining.



### Immunofluorescence

Confocal immunofluorescence analysis of HeLa cells using PAK2 monoclonal antibody, clone 3B5 (Cat # MAB10355) (green). Blue: DRAQ5 fluorescent DNA dye.

## Specification

<b>Product Description</b>	Mouse monoclonal antibody raised against recombinant PAK2.
<b>Immunogen</b>	Recombinant protein corresponding to human PAK2.
<b>Host</b>	Mouse
<b>Theoretical MW (kDa)</b>	61
<b>Reactivity</b>	Human
<b>Form</b>	Liquid
<b>Isotype</b>	IgG1
<b>Recommend Usage</b>	ELISA (1:10000) Western Blot (1:500-1:2000) Immunohistochemistry (1:200-1:1000) Immunofluorescence (1:200-1:1000) The optimal working dilution should be determined by the end user.
<b>Storage Buffer</b>	In ascites (0.03% sodium azide)
<b>Storage Instruction</b>	Store at 4°C. For long term storage store at -20°C. Aliquot to avoid repeated freezing and thawing.
<b>Note</b>	This product contains sodium azide: a POISONOUS AND HAZARDOUS SUBSTANCE which should be handled by trained staff only.

## Applications

- Western Blot (Cell lysate)

Western blot analysis using PAK2 monoclonal antibody, clone 3B5 (Cat # MAB10355) against HeLa (1), Jurkat (2), A-549 (3), HEK293 (4) and K-562 (5) cell lysate.

- Immunohistochemistry (Formalin/PFA-fixed paraffin-embedded sections)

Immunohistochemical analysis of paraffin-embedded human lung cancer (A) and gastric cancer (B) using PAK2 monoclonal antibody, clone 3B5 (Cat # MAB10355) with DAB staining.

- Immunofluorescence

Confocal immunofluorescence analysis of HeLa cells using PAK2 monoclonal antibody, clone 3B5 (Cat # MAB10355) (green). Blue: DRAQ5 fluorescent DNA dye.

- Enzyme-linked Immunoabsorbent Assay

## Gene Info — PAK2

Entrez GeneID [5062](#)

Gene Name PAK2

Gene Alias PAK65, PAKgamma

Gene Description p21 protein (Cdc42/Rac)-activated kinase 2

Omim ID [605022](#)

Gene Ontology [Hyperlink](#)

**Gene Summary** The p21 activated kinases (PAK) are critical effectors that link Rho GTPases to cytoskeleton reorganization and nuclear signaling. The PAK proteins are a family of serine/threonine kinases that serve as targets for the small GTP binding proteins, CDC42 and RAC1, and have been implicated in a wide range of biological activities. The protein encoded by this gene is activated by proteolytic cleavage during caspase-mediated apoptosis, and may play a role in regulating the apoptotic events in the dying cell. [provided by RefSeq]

**Other Designations** S6/H4 kinase|p21 (CDKN1A)-activated kinase 2|p21-activated kinase 2

## Pathway

- [Axon guidance](#)
- [ErbB signaling pathway](#)
- [Focal adhesion](#)
- [MAPK signaling pathway](#)
- [Regulation of actin cytoskeleton](#)
- [Renal cell carcinoma](#)
- [T cell receptor signaling pathway](#)

## Disease

- [Genetic Predisposition to Disease](#)
- [HIV Infections](#)
- [Schizophrenia](#)