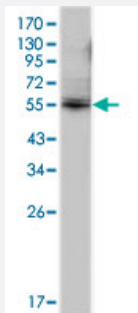


ETV4 monoclonal antibody, clone 1A2G3

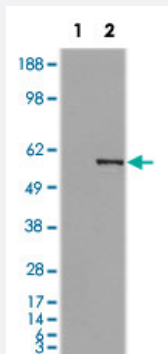
Catalog # MAB10352 Size 100 uL

Applications



Western Blot (Cell lysate)

Western blot analysis using ETV4 monoclonal antibody, clone 1A2G3 (Cat # MAB10352) against K-562 cell extracts.



Western Blot (Transfected lysate)

Western blot analysis using ETV4 monoclonal antibody, clone 1A2G3 (Cat # MAB10352) against HEK293T cells transfected with the pCMV6-ENTRY control (1) and pCMV6-ENTRY ETV4 cDNA (2).

Specification

Product Description	Mouse monoclonal antibody raised against partial recombinant ETV4.
Immunogen	Recombinant protein corresponding to amino acids 50-109 of human ETV4.
Host	Mouse
Theoretical MW (kDa)	54
Reactivity	Human
Form	Liquid

Isotype	IgG1
Recommend Usage	ELISA (1:10000) Western Blot (1:500-1:2000) The optimal working dilution should be determined by the end user.
Storage Buffer	In ascites (0.03% sodium azide)
Storage Instruction	Store at 4°C. For long term storage store at -20°C. Aliquot to avoid repeated freezing and thawing.
Note	This product contains sodium azide: a POISONOUS AND HAZARDOUS SUBSTANCE which should be handled by trained staff only.

Applications

- Western Blot (Cell lysate)

Western blot analysis using ETV4 monoclonal antibody, clone 1A2G3 (Cat # MAB10352) against K-562 cell extracts.

- Western Blot (Transfected lysate)

Western blot analysis using ETV4 monoclonal antibody, clone 1A2G3 (Cat # MAB10352) against HEK293T cells transfected with the pCMV6-ENTRY control (1) and pCMV6-ENTRY ETV4 cDNA (2).

- Enzyme-linked Immunoabsorbent Assay

Gene Info — ETV4

Entrez GeneID	2118
Gene Name	ETV4
Gene Alias	E1A-F, E1AF, PEA3, PEAS3
Gene Description	ets variant 4
Omim ID	600711
Gene Ontology	Hyperlink
Gene Summary	E1AF) ets variant gene 4 (E1A enhancer-binding protein
Other Designations	E1A enhancer binding protein EWS protein/E1A enhancer binding protein chimera ets variant gene 4 (E1A enhancer binding protein, E1AF) ets variant gene 4 (E1A enhancer-binding protein, E1AF) polyomavirus enhancer activator-3