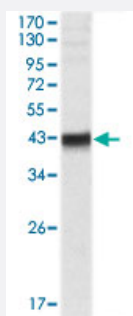


WNT10B monoclonal antibody, clone 5A7

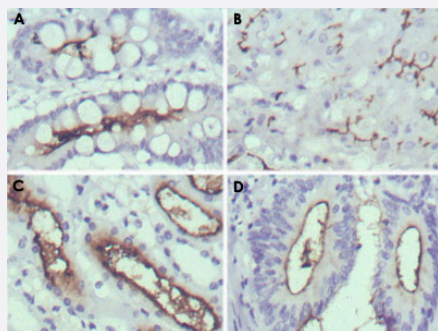
Catalog # MAB10347 Size 100 uL

Applications



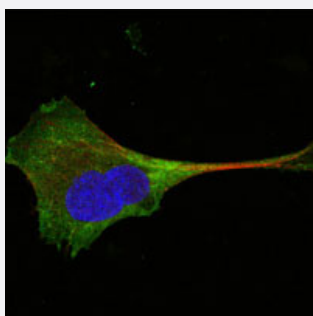
Western Blot (Cell lysate)

Western blot analysis using WNT10B monoclonal antibody, clone 5A7 (Cat # MAB10347) against HeLa cell extracts.



Immunohistochemistry (Formalin/PFA-fixed paraffin-embedded sections)

Immunohistochemical analysis of paraffin-embedded human normal stomach (A), normal liver (B), normal kidney (C) and rectum cancer tissue (D) using WNT10B monoclonal antibody, clone 5A7 (Cat # MAB10347) with DAB staining.



Immunofluorescence

Confocal immunofluorescence analysis of PANC-1 cells using WNT10B monoclonal antibody, clone 5A7 (Cat # MAB10347) (green). Red: Actin filaments have been labeled with Alexa Fluor-555 phalloidin. Blue: DRAQ5 fluorescent DNA dye.

Specification

Product Description

Mouse monoclonal antibody raised against recombinant WNT10B.

Immunogen

Recombinant protein corresponding to human WNT10B.

Host	Mouse
Theoretical MW (kDa)	43
Reactivity	Human
Form	Liquid
Isotype	IgG1
Recommend Usage	ELISA (1:10000) Western Blot (1:500-1:2000) Immunohistochemistry (1:200-1:1000) Immunofluorescence (1:200-1:1000) The optimal working dilution should be determined by the end user.
Storage Buffer	In ascites (0.03% sodium azide)
Storage Instruction	Store at 4°C. For long term storage store at -20°C. Aliquot to avoid repeated freezing and thawing.
Note	This product contains sodium azide: a POISONOUS AND HAZARDOUS SUBSTANCE which should be handled by trained staff only.

Applications

- Western Blot (Cell lysate)

Western blot analysis using WNT10B monoclonal antibody, clone 5A7 (Cat # MAB10347) against HeLa cell extracts.

- Immunohistochemistry (Formalin/PFA-fixed paraffin-embedded sections)

Immunohistochemical analysis of paraffin-embedded human normal stomach (A), normal liver (B), normal kidney (C) and rectum cancer tissue (D) using WNT10B monoclonal antibody, clone 5A7 (Cat # MAB10347) with DAB staining.

- Immunofluorescence

Confocal immunofluorescence analysis of PANC-1 cells using WNT10B monoclonal antibody, clone 5A7 (Cat # MAB10347) (green). Red: Actin filaments have been labeled with Alexa Fluor-555 phalloidin. Blue: DRAQ5 fluorescent DNA dye.

- Enzyme-linked Immunoabsorbent Assay

Gene Info — WNT10B

Entrez GeneID [7480](#)

Gene Name WNT10B

Gene Alias	SHFM6, WNT-12
Gene Description	wingless-type MMTV integration site family, member 10B
Omim ID	601906
Gene Ontology	Hyperlink
Gene Summary	<p>The WNT gene family consists of structurally related genes which encode secreted signaling proteins. These proteins have been implicated in oncogenesis and in several developmental processes, including regulation of cell fate and patterning during embryogenesis. This gene is a member of the WNT gene family. It may be involved in breast cancer, and its protein signaling is likely a molecular switch that governs adipogenesis. This protein is 96% identical to the mouse Wnt10b protein at the amino acid level. This gene is clustered with another family member, WNT1, in the chromosome 12q13 region. [provided by RefSeq]</p>
Other Designations	WNT-10B protein

Pathway

- [Basal cell carcinoma](#)
- [Hedgehog signaling pathway](#)
- [Melanogenesis](#)
- [Pathways in cancer](#)
- [Wnt signaling pathway](#)

Disease

- [Amyotrophic lateral sclerosis](#)
- [Anoxia](#)
- [Cardiovascular Diseases](#)
- [Diabetes Mellitus](#)
- [Edema](#)
- [Fractures](#)
- [Genetic Predisposition to Disease](#)
- [Hip Fractures](#)

- [Osteoporosis](#)
- [Ovarian Neoplasms](#)
- [Spinal Fractures](#)