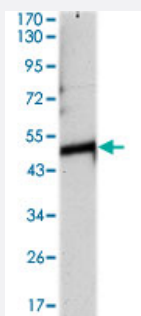


TUBA8 monoclonal antibody, clone 2D6

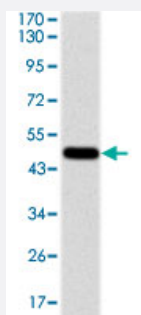
Catalog # MAB10340 Size 100 uL

Applications



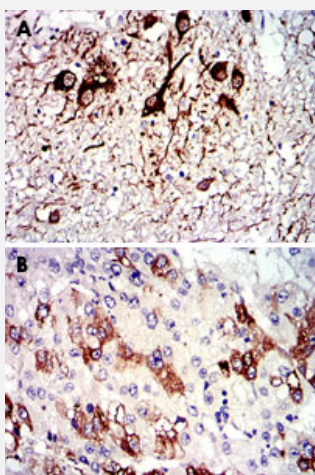
Western Blot (Tissue lysate)

Western blot analysis using TUBA8 monoclonal antibody, clone 2D6 (Cat # MAB10340) against rat heart tissue extracts.



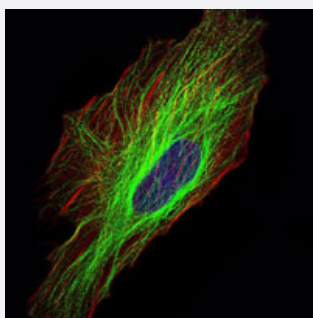
Western Blot (Recombinant protein)

Western blot analysis using TUBA8 monoclonal antibody, clone 2D6 (Cat # MAB10340) against recombinant human TUBA8 protein.



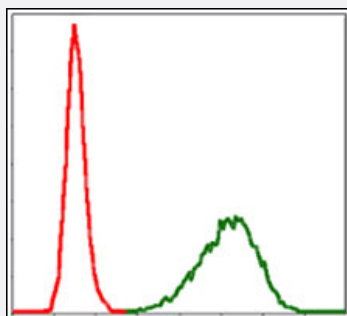
Immunohistochemistry (Formalin/PFA-fixed paraffin-embedded sections)

Immunohistochemical analysis of paraffin-embedded human medulla oblongata tissue (A) and liver cancer tissue (B) using TUBA8 monoclonal antibody, clone 2D6 (Cat # MAB10340) with DAB staining.



Immunofluorescence

Immunofluorescence analysis of HeLa cells using TUBA8 monoclonal antibody, clone 2D6 (Cat # MAB10340) (green). Blue: DRAQ5 fluorescent DNA dye. Red: Actin filaments have been labeled with Alexa Fluor-555 phalloidin.



Flow Cytometry

Flow cytometric analysis of NIH/3T3 cells using TUBA8 monoclonal antibody, clone 2D6 (Cat # MAB10340) (green) and negative control (red).

Specification

Product Description	Mouse monoclonal antibody raised against recombinant TUBA8.
Immunogen	Recombinant protein corresponding to human TUBA8.
Host	Mouse
Theoretical MW (kDa)	50
Reactivity	Human
Form	Liquid
Isotype	IgG2b
Recommend Usage	ELISA (1:10000) Western Blot (1:500-1:2000) Immunohistochemistry (1:200-1:1000) Immunofluorescence (1:200-1:1000) Flow cytometry (1:200-1:400) The optimal working dilution should be determined by the end user.
Storage Buffer	In ascites (0.03% sodium azide)
Storage Instruction	Store at 4°C. For long term storage store at -20°C. Aliquot to avoid repeated freezing and thawing.

Note

This product contains sodium azide: a POISONOUS AND HAZARDOUS SUBSTANCE which should be handled by trained staff only.

Applications

- Western Blot (Tissue lysate)

Western blot analysis using TUBA8 monoclonal antibody, clone 2D6 (Cat # MAB10340) against rat heart tissue extracts.

- Western Blot (Recombinant protein)

Western blot analysis using TUBA8 monoclonal antibody, clone 2D6 (Cat # MAB10340) against recombinant human TUBA8 protein.

- Immunohistochemistry (Formalin/PFA-fixed paraffin-embedded sections)

Immunohistochemical analysis of paraffin-embedded human medulla oblongata tissue (A) and liver cancer tissue (B) using TUBA8 monoclonal antibody, clone 2D6 (Cat # MAB10340) with DAB staining.

- Immunofluorescence

Immunofluorescence analysis of HeLa cells using TUBA8 monoclonal antibody, clone 2D6 (Cat # MAB10340) (green). Blue: DRAQ5 fluorescent DNA dye. Red: Actin filaments have been labeled with Alexa Fluor-555 phalloidin.

- Enzyme-linked Immunoabsorbent Assay

- Flow Cytometry

Flow cytometric analysis of NIH/3T3 cells using TUBA8 monoclonal antibody, clone 2D6 (Cat # MAB10340) (green) and negative control (red).

Gene Info — TUBA8

Entrez GeneID	51807
---------------	-----------------------

Gene Name	TUBA8
-----------	-------

Gene Alias	TUBAL2
------------	--------

Gene Description	tubulin, alpha 8
------------------	------------------

Omim ID	605742
---------	------------------------

Gene Ontology	Hyperlink
---------------	---------------------------

Gene Summary	O
--------------	---

Other Designations

OTTHUMP00000196216|tubulin, alpha-like 2

Pathway

- [Gap junction](#)
- [Pathogenic Escherichia coli infection - EHEC](#)

Disease

- [Bipolar Disorder](#)
- [Cardiovascular Diseases](#)
- [Diabetes Mellitus](#)
- [Edema](#)
- [Schizophrenia](#)