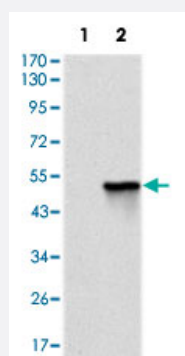


TNNI2 monoclonal antibody, clone 2F12G2

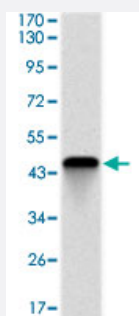
Catalog # MAB10339 Size 100 ug

Applications



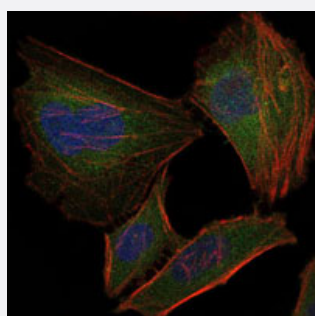
Western Blot (Transfected lysate)

Western blot analysis using TNNI2 monoclonal antibody, clone 2F12G2 (Cat # MAB10339) against HEK293 (1) and TNNI2 (aa1-182)-hlgGfC transfected HEK293 (2) cell lysate.



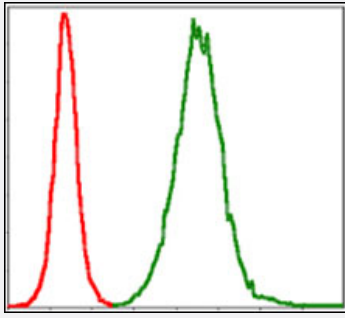
Western Blot (Recombinant protein)

Western blot analysis using TNNI2 monoclonal antibody, clone 2F12G2 (Cat # MAB10339) against recombinant human TNNI2 protein.



Immunofluorescence

Immunofluorescence analysis of HeLa cells using TNNI2 monoclonal antibody, clone 2F12G2 (Cat # MAB10339) (green). Blue: DRAQ5 fluorescent DNA dye. Red: Actin filaments have been labeled with Alexa Fluor-555 phalloidin.



Flow Cytometry

Flow cytometric analysis of NIH/3T3 cells using TNNI2 monoclonal antibody, clone 2F12G2 (Cat # MAB10339) (green) and negative control (red).

Specification

Product Description	Mouse monoclonal antibody raised against recombinant TNNI2.
Immunogen	Recombinant protein corresponding to human TNNI2.
Host	Mouse
Theoretical MW (kDa)	21
Reactivity	Human
Form	Liquid
Isotype	IgG1
Recommend Usage	ELISA (1:10000) Western Blot (1:500-1:2000) Immunofluorescence (1:200-1:1000) Flow cytometry (1:200-1:400) The optimal working dilution should be determined by the end user.
Storage Buffer	In PBS (0.05% sodium azide)
Storage Instruction	Store at 4°C. For long term storage store at -20°C. Aliquot to avoid repeated freezing and thawing.
Note	This product contains sodium azide: a POISONOUS AND HAZARDOUS SUBSTANCE which should be handled by trained staff only.

Applications

- Western Blot (Transfected lysate)

Western blot analysis using TNNI2 monoclonal antibody, clone 2F12G2 (Cat # MAB10339) against HEK293 (1) and TNNI2 (aa1-182)-hlgGfc transfected HEK293 (2) cell lysate.

- Western Blot (Recombinant protein)

Western blot analysis using TNNI2 monoclonal antibody, clone 2F12G2 (Cat # MAB10339) against recombinant human TNNI2 protein.

- Immunofluorescence

Immunofluorescence analysis of HeLa cells using TNNI2 monoclonal antibody, clone 2F12G2 (Cat # MAB10339) (green). Blue: DRAQ5 fluorescent DNA dye. Red: Actin filaments have been labeled with Alexa Fluor-555 phalloidin.

- Enzyme-linked Immunoabsorbent Assay

- Flow Cytometry

Flow cytometric analysis of NIH/3T3 cells using TNNI2 monoclonal antibody, clone 2F12G2 (Cat # MAB10339) (green) and negative control (red).

Gene Info — TNNI2

Entrez GeneID [7136](#)

Gene Name TNNI2

Gene Alias AMCD2B, DA2B, FSSV

Gene Description troponin I type 2 (skeletal, fast)

Omim ID [191043 601680](#)

Gene Ontology [Hyperlink](#)

Gene Summary

This gene encodes a fast-twitch skeletal muscle protein, a member of the troponin I gene family, and a component of the troponin complex including troponin T, troponin C and troponin I subunits. The troponin complex, along with tropomyosin, is responsible for the calcium-dependent regulation of striated muscle contraction. Mouse studies show that this component is also present in vascular smooth muscle and may play a role in regulation of smooth muscle function. In addition to muscle tissues, this protein is found in corneal epithelium, cartilage where it is an inhibitor of angiogenesis to inhibit tumor growth and metastasis, and mammary gland where it functions as a co-activator of estrogen receptor-related receptor alpha. This protein also suppresses tumor growth in human ovarian carcinoma. Mutations in this gene cause myopathy and distal arthrogryposis type 2B. Alternatively spliced transcript variants have been found for this gene. [provided by RefSeq]

Other Designations OTTHUMP00000014141|OTTHUMP00000014142|troponin I fast twitch 2|troponin I, fast-twitch skeletal muscle isoform|troponin I, skeletal, fast

Disease

- [Cardiovascular Diseases](#)
- [Diabetes Mellitus](#)
- [Edema](#)