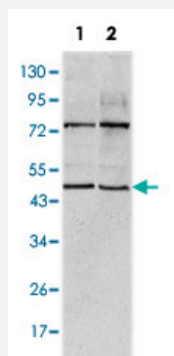


THAP11 monoclonal antibody, clone 3F3

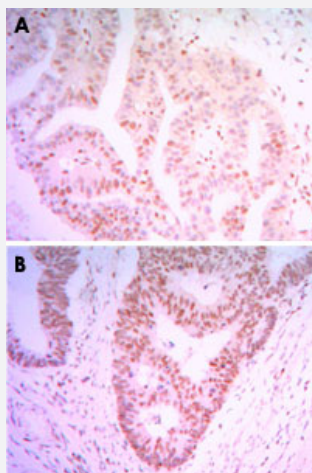
Catalog # MAB10334 Size 100 uL

Applications



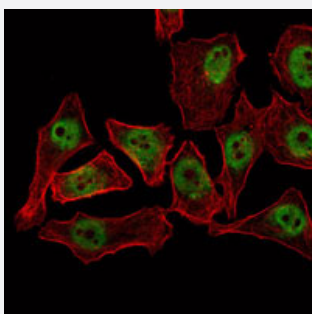
Western Blot (Cell lysate)

Western blot analysis using THAP11 monoclonal antibody, clone 3F3 (Cat # MAB10334) against HeLa (1) and NTERA-2 (2) cell lysate.



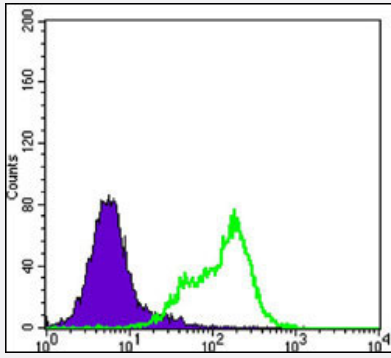
Immunohistochemistry (Formalin/PFA-fixed paraffin-embedded sections)

Immunohistochemical analysis of paraffin-embedded human colon cancer tissue (A) and ovary cancer tissue (B) using THAP11 monoclonal antibody, clone 3F3 (Cat # MAB10334) with DAB staining.



Immunofluorescence

Immunofluorescence analysis of NTERA-2 cells using THAP11 monoclonal antibody, clone 3F3 (Cat # MAB10334) (green). Red: Actin filaments have been labeled with Alexa Fluor-555 phalloidin.



Flow Cytometry

Flow cytometric analysis of HeLa cells using THAP11 monoclonal antibody, clone 3F3 (Cat # MAB10334) (green) and negative control (purple).

Specification

Product Description	Mouse monoclonal antibody raised against recombinant THAP11.
Immunogen	Recombinant protein corresponding to human THAP11.
Host	Mouse
Theoretical MW (kDa)	44
Reactivity	Human
Form	Liquid
Isotype	IgG1
Recommend Usage	ELISA (1:10000) Western Blot (1:500-1:2000) Immunohistochemistry (1:200-1:1000) Immunofluorescence (1:200-1:1000) Flow cytometry (1:200-1:400) The optimal working dilution should be determined by the end user.
Storage Buffer	In ascites (0.03% sodium azide)
Storage Instruction	Store at 4°C. For long term storage store at -20°C. Aliquot to avoid repeated freezing and thawing.
Note	This product contains sodium azide: a POISONOUS AND HAZARDOUS SUBSTANCE which should be handled by trained staff only.

Applications

- Western Blot (Cell lysate)

Western blot analysis using THAP11 monoclonal antibody, clone 3F3 (Cat # MAB10334) against HeLa (1) and NTERA-2 (2) cell lysate.

- Immunohistochemistry (Formalin/PFA-fixed paraffin-embedded sections)

Immunohistochemical analysis of paraffin-embedded human colon cancer tissue (A) and ovary cancer tissue (B) using THAP11 monoclonal antibody, clone 3F3 (Cat # MAB10334) with DAB staining.

- Immunofluorescence

Immunofluorescence analysis of NTERA-2 cells using THAP11 monoclonal antibody, clone 3F3 (Cat # MAB10334) (green). Red: Actin filaments have been labeled with Alexa Fluor-555 phalloidin.

- Enzyme-linked Immunoabsorbent Assay

- Flow Cytometry

Flow cytometric analysis of HeLa cells using THAP11 monoclonal antibody, clone 3F3 (Cat # MAB10334) (green) and negative control (purple).

Gene Info — THAP11

Entrez GeneID [57215](#)

Gene Name THAP11

Gene Alias CTG-B43a, CTG-B45d, HRIHFB2206, RONIN

Gene Description THAP domain containing 11

Omim ID [609119](#)

Gene Ontology [Hyperlink](#)

Gene Summary The protein encoded by this gene contains a THAP domain, which is a conserved DNA-binding domain that has striking similarity to the site-specific DNA-binding domain (DBD) of Drosophila P element transposases. [provided by RefSeq]

Other Designations THAP domain-containing protein 11