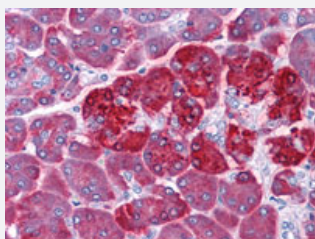


# REG1A monoclonal antibody, clone 1A4

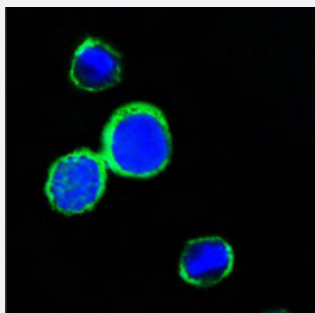
Catalog # MAB10312      Size 100 uL

## Applications



### Immunohistochemistry (Formalin/PFA-fixed paraffin-embedded sections)

Immunohistochemical analysis of paraffin-embedded human pancreas tissue using REG1A monoclonal antibody, clone 1A4 (Cat # MAB10312) with DAB staining.



### Immunofluorescence

Confocal immunofluorescence analysis of PC-12 cells using REG1A monoclonal antibody, clone 1A4 (Cat # MAB10312) (green). Blue: DRAQ5 fluorescent DNA dye.

## Specification

Product Description	Mouse monoclonal antibody raised against recombinant REG1A.
Immunogen	Recombinant protein corresponding to human REG1A.
Host	Mouse
Theoretical MW (kDa)	19
Reactivity	Human
Form	Liquid
Isotype	IgG1

<b>Recommend Usage</b>	ELISA (1:10000) Immunohistochemistry (1:200-1:1000) Immunofluorescence (1:200-1:1000) The optimal working dilution should be determined by the end user.
<b>Storage Buffer</b>	In ascites (0.03% sodium azide)
<b>Storage Instruction</b>	Store at 4°C. For long term storage store at -20°C. Aliquot to avoid repeated freezing and thawing.
<b>Note</b>	This product contains sodium azide: a POISONOUS AND HAZARDOUS SUBSTANCE which should be handled by trained staff only.

## Applications

- Immunohistochemistry (Formalin/PFA-fixed paraffin-embedded sections)

Immunohistochemical analysis of paraffin-embedded human pancreas tissue using REG1A monoclonal antibody, clone 1A4 (Cat # MAB10312) with DAB staining.

- Immunofluorescence

Confocal immunofluorescence analysis of PC-12 cells using REG1A monoclonal antibody, clone 1A4 (Cat # MAB10312) (green). Blue: DRAQ5 fluorescent DNA dye.

- Enzyme-linked Immunoabsorbent Assay

## Gene Info — REG1A

<b>Entrez GeneID</b>	<a href="#">5967</a>
<b>Gene Name</b>	REG1A
<b>Gene Alias</b>	ICRF, MGC12447, P19, PSP, PSPS, PSPS1, PTP, REG
<b>Gene Description</b>	regenerating islet-derived 1 alpha
<b>Omim ID</b>	<a href="#">167770</a>
<b>Gene Ontology</b>	<a href="#">Hyperlink</a>

**Gene Summary**

This gene is a type I subclass member of the Reg gene family. The Reg gene family is a multigene family grouped into four subclasses, types I, II, III and IV, based on the primary structures of the encoded proteins. This gene encodes a protein that is secreted by the exocrine pancreas. It is associated with islet cell regeneration and diabetogenesis and may be involved in pancreatic lithogenesis. Reg family members REG1B, REGL, PAP and this gene are tandemly clustered on chromosome 2p12 and may have arisen from the same ancestral gene by gene duplication. [provided by RefSeq]

**Other Designations**

OTTHUMP00000160485|islet cells regeneration factor|islet of langerhans regenerating protein|lithostathine 1 alpha|pancreatic stone protein, secretory|pancreatic thread protein|protein-X|regenerating islet-derived 1 alpha (pancreatic stone protein, pancrea

**Disease**

- [Calcinosis](#)
- [Diabetes Mellitus](#)
- [Pancreatitis](#)
- [Tobacco Use Disorder](#)