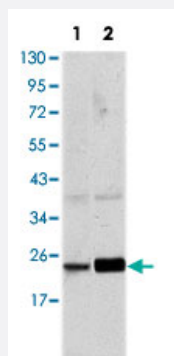


RAB10 monoclonal antibody, clone 4E2

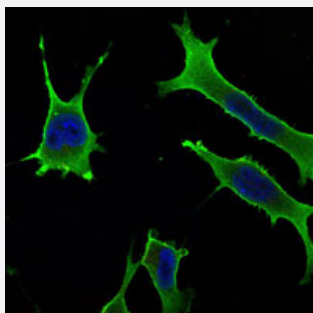
Catalog # MAB10309 Size 100 uL

Applications



Western Blot (Cell lysate)

Western blot analysis using RAB10 monoclonal antibody, clone 4E2 (Cat # MAB10309) against HeLa (1) and NIH/3T3 (2) cell lysate.



Immunofluorescence

Immunofluorescence analysis of LoVo cells using RAB10 monoclonal antibody, clone 4E2 (Cat # MAB10309) (green). Blue: DRAQ5 fluorescent DNA dye.

Specification

Product Description	Mouse monoclonal antibody raised against recombinant RAB10.
Immunogen	Recombinant protein corresponding to human RAB10.
Host	Mouse
Theoretical MW (kDa)	22.5
Reactivity	Human, Mouse
Form	Liquid

Isotype	IgG1
Recommend Usage	ELISA (1:10000) Western Blot (1:500-1:2000) Immunofluorescence (1:200-1:1000) The optimal working dilution should be determined by the end user.
Storage Buffer	In ascites (0.03% sodium azide)
Storage Instruction	Store at 4°C. For long term storage store at -20°C. Aliquot to avoid repeated freezing and thawing.
Note	This product contains sodium azide: a POISONOUS AND HAZARDOUS SUBSTANCE which should be handled by trained staff only.

Applications

- Western Blot (Cell lysate)

Western blot analysis using RAB10 monoclonal antibody, clone 4E2 (Cat # MAB10309) against HeLa (1) and NIH/3T3 (2) cell lysate.

- Immunofluorescence

Immunofluorescence analysis of LoVo cells using RAB10 monoclonal antibody, clone 4E2 (Cat # MAB10309) (green). Blue: DRAQ5 fluorescent DNA dye.

- Enzyme-linked Immunoabsorbent Assay

Gene Info — RAB10

Entrez GeneID	10890
Gene Name	RAB10
Gene Alias	-
Gene Description	RAB10, member RAS oncogene family
Gene Ontology	Hyperlink
Gene Summary	RAB10 belongs to the RAS (see HRAS; MIM 190020) superfamily of small GTPases. RAB proteins localize to exocytic and endocytic compartments and regulate intracellular vesicle trafficking (Bao et al., 1998 [PubMed 9918381]).[supplied by OMIM]
Other Designations	GTP-binding protein RAB10 ras-related GTP-binding protein ras-related GTP-binding protein RAB10

Disease

- [Tobacco Use Disorder](#)