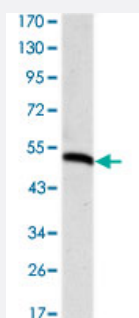


PODXL monoclonal antibody, clone 5F5

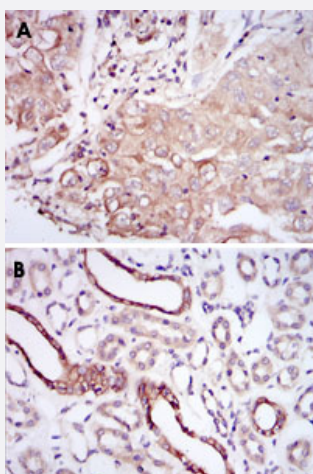
Catalog # MAB10299 Size 100 uL

Applications



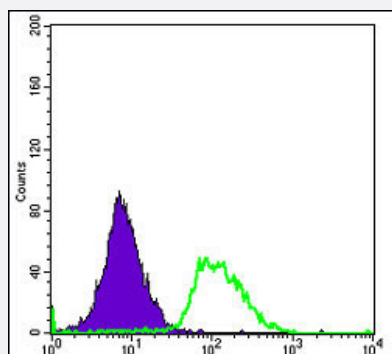
Western Blot (Recombinant protein)

Western blot analysis using PODXL monoclonal antibody, clone 5F5 (Cat # MAB10299) against recombinant human PODXL protein.



Immunohistochemistry (Formalin/PFA-fixed paraffin-embedded sections)

Immunohistochemical analysis of paraffin-embedded human lung cancer tissue (A) and kidney tissue (B) using PODXL monoclonal antibody, clone 5F5 (Cat # MAB10299) with DAB staining.



Flow Cytometry

Flow cytometric analysis of HeLa cells using PODXL monoclonal antibody, clone 5F5 (Cat # MAB10299) (green) and negative control (purple).

Specification

Product Description	Mouse monoclonal antibody raised against recombinant PODXL.
Immunogen	Recombinant protein corresponding to human PODXL.
Host	Mouse
Theoretical MW (kDa)	49
Reactivity	Human
Form	Liquid
Isotype	IgG1
Recommend Usage	ELISA (1:10000) Western Blot (1:500-1:2000) Immunohistochemistry (1:200-1:1000) Flow cytometry (1:200-1:400) The optimal working dilution should be determined by the end user.
Storage Buffer	In ascites (0.03% sodium azide)
Storage Instruction	Store at 4°C. For long term storage store at -20°C. Aliquot to avoid repeated freezing and thawing.
Note	This product contains sodium azide: a POISONOUS AND HAZARDOUS SUBSTANCE which should be handled by trained staff only.

Applications

- Western Blot (Recombinant protein)

Western blot analysis using PODXL monoclonal antibody, clone 5F5 (Cat # MAB10299) against recombinant human PODXL protein.

- Immunohistochemistry (Formalin/PFA-fixed paraffin-embedded sections)

Immunohistochemical analysis of paraffin-embedded human lung cancer tissue (A) and kidney tissue (B) using PODXL monoclonal antibody, clone 5F5 (Cat # MAB10299) with DAB staining.

- Enzyme-linked Immunoabsorbent Assay

- Flow Cytometry

Flow cytometric analysis of HeLa cells using PODXL monoclonal antibody, clone 5F5 (Cat # MAB10299) (green) and negative control (purple).

Gene Info — PODXL

Entrez GeneID [5420](#)**Gene Name** PODXL**Gene Alias** Gp200, MGC138240, PC, PCLP**Gene Description** podocalyxin-like**Omim ID** [602632](#)**Gene Ontology** [Hyperlink](#)

Gene Summary This gene encodes a member of the sialomucin protein family. The encoded protein was originally identified as an important component of glomerular podocytes. Podocytes are highly differentiated epithelial cells with interdigitating foot processes covering the outer aspect of the glomerular basement membrane. Other biological activities of the encoded protein include: binding in a membrane protein complex with Na⁺/H⁺ exchanger regulatory factor to intracellular cytoskeletal elements, playing a role in hematopoietic cell differentiation, and being expressed in vascular endothelium cells and binding to L-selectin. [provided by RefSeq]

Other Designations -

Disease

- [Genetic Predisposition to Disease](#)
- [Neoplasm Invasiveness](#)
- [Ovarian Neoplasms](#)
- [Prostate cancer](#)
- [Prostatic Neoplasms](#)