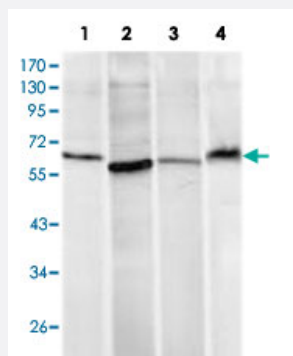


RCHY1 monoclonal antibody, clone 1H10

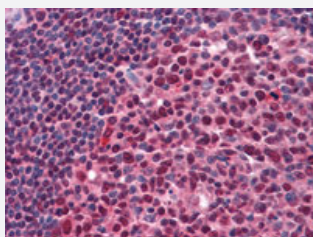
Catalog # MAB10298 Size 100 uL

Applications



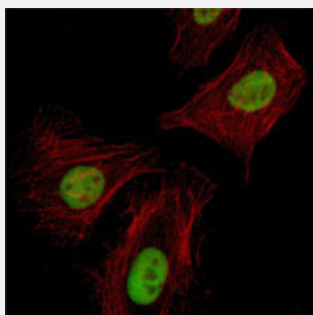
Western Blot (Cell lysate)

Western blot analysis using RCHY1 monoclonal antibody, clone 1H10 (Cat # MAB10298) against HeLa (1), A-549 (2), MCF-7 (3) and PC-12 (4) cell lysate.



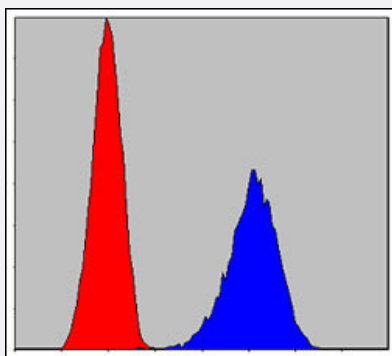
Immunohistochemistry (Formalin/PFA-fixed paraffin-embedded sections)

Immunohistochemical analysis of paraffin-embedded human tonsil tissue using RCHY1 monoclonal antibody, clone 1H10 (Cat # MAB10298) with DAB staining.



Immunofluorescence

Immunofluorescence analysis of HeLa cells using RCHY1 monoclonal antibody, clone 1H10 (Cat # MAB10298) (green). Red: Actin filaments have been labeled with Alexa Fluor-555 phalloidin.



Flow Cytometry

Flow cytometric analysis of PC-12 cells using RCHY1 monoclonal antibody, clone 1H10 (Cat # MAB10298) (blue) and negative control (red).

Specification

Product Description	Mouse monoclonal antibody raised against recombinant RCHY1.
Immunogen	Recombinant protein corresponding to human RCHY1.
Host	Mouse
Theoretical MW (kDa)	30, 60
Reactivity	Human
Form	Liquid
Isotype	IgG1
Recommend Usage	ELISA (1:10000) Western Blot (1:500-1:2000) Immunohistochemistry (1:200-1:1000) Immunofluorescence (1:200-1:1000) Flow cytometry (1:200-1:400) The optimal working dilution should be determined by the end user.
Storage Buffer	In ascites (0.03% sodium azide)
Storage Instruction	Store at 4°C. For long term storage store at -20°C. Aliquot to avoid repeated freezing and thawing.
Note	This product contains sodium azide: a POISONOUS AND HAZARDOUS SUBSTANCE which should be handled by trained staff only.

Applications

- Western Blot (Cell lysate)

Western blot analysis using RCHY1 monoclonal antibody, clone 1H10 (Cat # MAB10298) against HeLa (1), A-549 (2), MCF-7 (3) and PC-12 (4) cell lysate.

- Immunohistochemistry (Formalin/PFA-fixed paraffin-embedded sections)

Immunohistochemical analysis of paraffin-embedded human tonsil tissue using RCHY1 monoclonal antibody, clone 1H10 (Cat # MAB10298) with DAB staining.

- Immunofluorescence

Immunofluorescence analysis of HeLa cells using RCHY1 monoclonal antibody, clone 1H10 (Cat # MAB10298) (green). Red: Actin filaments have been labeled with Alexa Fluor-555 phalloidin.

- Enzyme-linked Immunoabsorbent Assay

- Flow Cytometry

Flow cytometric analysis of PC-12 cells using RCHY1 monoclonal antibody, clone 1H10 (Cat # MAB10298) (blue) and negative control (red).

Gene Info — RCHY1

Entrez GeneID [25898](#)

Gene Name RCHY1

Gene Alias ARNIP, CHIMP, DKFZp586C1620, PIRH2, PRO1996, RNF199, ZNF363, hARNIP

Gene Description ring finger and CHY zinc finger domain containing 1

Omim ID [607680](#)

Gene Ontology [Hyperlink](#)

Gene Summary The protein encoded by this gene has ubiquitin-protein ligase activity. This protein binds with p53 and promotes the ubiquitin-mediated proteosomal degradation of p53. This gene is oncogenic because loss of p53 function contributes directly to malignant tumor development. Transcription of this gene is regulated by p53. Alternative splicing results in multiple transcript variants encoding different isoforms. [provided by RefSeq]

Other Designations CH-rich interacting match with PLAG1|androgen-receptor N-terminal-interacting protein|zinc finger protein 363

Pathway

- [p53 signaling pathway](#)
- [Ubiquitin mediated proteolysis](#)