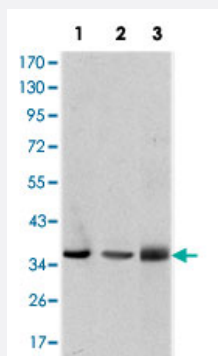


LIMS1 monoclonal antibody, clone 5G7

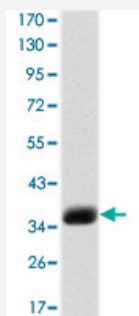
Catalog # MAB10297 Size 100 uL

Applications



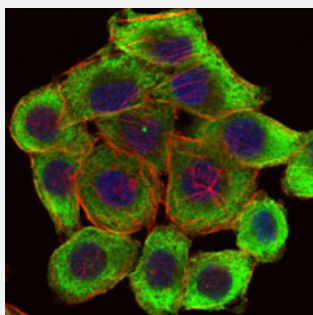
Western Blot (Cell lysate)

Western blot analysis using LIMS1 monoclonal antibody, clone 5G7 (Cat # MAB10297) against A-549 (1), Jurkat (2), and HeLa (3) cell lysate.



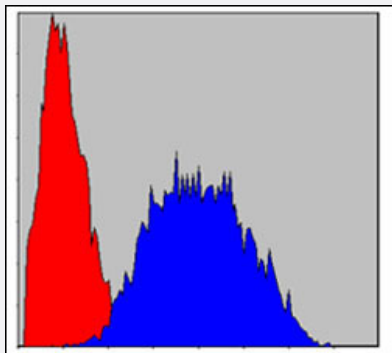
Western Blot (Recombinant protein)

Western blot analysis using LIMS1 monoclonal antibody, clone 5G7 (Cat # MAB10297) against recombinant human LIMS1 protein.



Immunofluorescence

Immunofluorescence analysis of HepG2 cells using LIMS1 monoclonal antibody, clone 5G7 (Cat # MAB10297) (green). Blue: DRAQ5 fluorescent DNA dye. Red: Actin filaments have been labeled with Alexa Fluor-555 phalloidin.



Flow Cytometry

Flow cytometric analysis of HeLa cells using LIMS1 monoclonal antibody, clone 5G7 (Cat # MAB10297) (blue) and negative control (red).

Specification

Product Description	Mouse monoclonal antibody raised against recombinant LIMS1.
Immunogen	Recombinant protein corresponding to human LIMS1.
Host	Mouse
Theoretical MW (kDa)	37
Reactivity	Human
Form	Liquid
Isotype	IgG1
Recommend Usage	ELISA (1:10000) Western Blot (1:500-1:2000) Immunofluorescence (1:200-1:1000) Flow cytometry (1:200-1:400) The optimal working dilution should be determined by the end user.
Storage Buffer	In ascites (0.03% sodium azide)
Storage Instruction	Store at 4°C. For long term storage store at -20°C. Aliquot to avoid repeated freezing and thawing.
Note	This product contains sodium azide: a POISONOUS AND HAZARDOUS SUBSTANCE which should be handled by trained staff only.

Applications

- Western Blot (Cell lysate)

Western blot analysis using LIMS1 monoclonal antibody, clone 5G7 (Cat # MAB10297) against A-549 (1), Jurkat (2), and HeLa (3) cell lysate.

- Western Blot (Recombinant protein)

Western blot analysis using LIMS1 monoclonal antibody, clone 5G7 (Cat # MAB10297) against recombinant human LIMS1 protein.

- Immunofluorescence

Immunofluorescence analysis of HepG2 cells using LIMS1 monoclonal antibody, clone 5G7 (Cat # MAB10297) (green). Blue: DRAQ5 fluorescent DNA dye. Red: Actin filaments have been labeled with Alexa Fluor-555 phalloidin.

- Enzyme-linked Immunoabsorbent Assay

- Flow Cytometry

Flow cytometric analysis of HeLa cells using LIMS1 monoclonal antibody, clone 5G7 (Cat # MAB10297) (blue) and negative control (red).

Gene Info — LIMS1

Entrez GeneID [3987](#)

Gene Name LIMS1

Gene Alias PINCH, PINCH1

Gene Description LIM and senescent cell antigen-like domains 1

Omim ID [602567](#)

Gene Ontology [Hyperlink](#)

Gene Summary The protein encoded by this gene is an adaptor protein which contains five LIM domains, or double zinc fingers. The protein is likely involved in integrin signaling through its LIM domain-mediated interaction with integrin-linked kinase, found in focal adhesion plaques. It is also thought to act as a bridge linking integrin-linked kinase to NCK adaptor protein 2, which is involved in growth factor receptor kinase signaling pathways. Its localization to the periphery of spreading cells also suggests that this protein may play a role in integrin-mediated cell adhesion or spreading. [provided by RefSeq]

Other Designations OTTHUMP00000161608