

# Il17a monoclonal antibody, clone 20B4.G10.F5

Catalog # MAB10273      Size 100 ug

## Applications

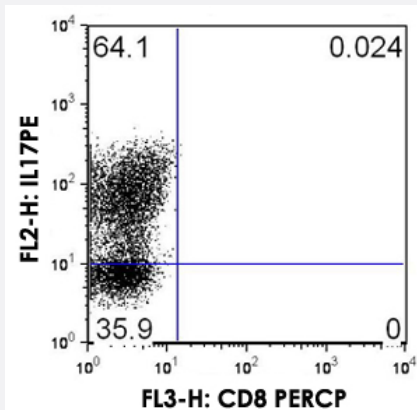


### Western Blot (Recombinant protein)

Western blot analysis of recombinant protein with Il17a monoclonal antibody, clone 20B4.G10.F5 (Cat # MAB10273) at 1:1000 dilution.

### Flow Cytometry

Mouse CD4<sup>+</sup> T cells were isolated from freshly dissected spleen by centrifugation in T cell separation media and selected by magnetic separation. Cells were grown on plates coated with anti-CD3 antibody, and stimulated with: 5 ug/mL anti-CD28, 10 ng/mL IL-1beta, 50 ng/mL mouse IL-6, 1 ng/mL TGFbeta1 and 10 ug/mL anti-mouse IFNa over 8-10 days of culture. Cells were incubated for 15-20 minutes with Add rat anti-mouse CD4 APC at a concentration of 0.125 ug/mL, washed, fixed and permeabilized and incubated with Il17a monoclonal antibody, clone 20B4.G10.F5 (Cat ID # MAB10273) or controls as shown. Cells were washed, incubated in streptavidin conjugated PE, fixed and analyzed by Flow cytometry.



## Specification

Product Description	Rat monoclonal antibody raised against full length recombinant Il17a.
Immunogen	Recombinant protein corresponding to full length mouse Il17a.
Host	Rat
Theoretical MW (kDa)	23

Reactivity	Mouse
Specificity	This antibody is specific for mouse IL-17A protein. Cross-reactivity with IL-17A from other sources has not been determined.
Form	Liquid
Recommend Usage	Western Blot (1:1000) The optimal working dilution should be determined by the end user.
Storage Buffer	In 20 mM KH <sub>2</sub> PO <sub>4</sub> , 150 mM NaCl, pH 7.2 (0.01% sodium azide)
Storage Instruction	Store at 4°C. For long term storage store at -20°C. Aliquot to avoid repeated freezing and thawing.
Note	This product contains sodium azide: a POISONOUS AND HAZARDOUS SUBSTANCE which should be handled by trained staff only.

## Applications

- Western Blot (Recombinant protein)

Western blot analysis of recombinant protein with Il17a monoclonal antibody, clone 20B4.G10.F5 (Cat # MAB10273) at 1:1000 dilution.

- Flow Cytometry

Mouse CD4<sup>+</sup> T cells were isolated from freshly dissected spleen by centrifugation in T cell separation media and selected by magnetic separation. Cells were grown on plates coated with anti-CD3 antibody, and stimulated with: 5 ug/mL anti-CD28, 10 ng/mL IL-1beta, 50 ng/mL mouse IL-6, 1 ng/mL TGFbeta1 and 10 ug/mL anti-mouse IFNalpha over 8-10 days of culture. Cells were incubated for 15-20 minutes with Add rat anti-mouse CD4 APC at a concentration of 0.125 ug/mL, washed, fixed and permeabilized and incubated with Il17a monoclonal antibody, clone 20B4.G10.F5 (Cat ID # MAB10273) or controls as shown. Cells were washed, incubated in streptavidin conjugated PE, fixed and analyzed by Flow cytometry.

## Gene Info — Il17a

Entrez GeneID	<a href="#">16171</a>
Gene Name	Il17a
Gene Alias	Ctla-8, Ctla8, Il17
Gene Description	interleukin 17A
Gene Ontology	<a href="#">Hyperlink</a>
Other Designations	interleukin 17