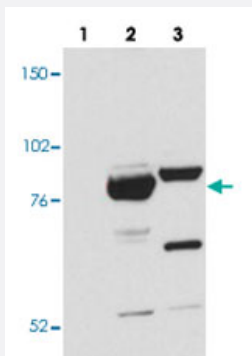


Esrp1/Esrp2 monoclonal antibody, clone 23A7.C9

Catalog # MAB10272 Size 100 ug

Applications



Western Blot (Cell lysate)

Western blot analysis of 293T with Esrp1/Esrp2 monoclonal antibody, clone 23A7.C9 (Cat # MAB10272) at 1:1000 dilution. Lane 1: GFP-transfected; Lane 2: Esrp-1 transfected; Lane 3: Esrp-2 transfected.

Specification

Product Description	Mouse monoclonal antibody raised against full length recombinant Esrp1/Esrp2.
Immunogen	Recombinant GST fusion protein corresponding to full length mouse Esrp1/Esrp2.
Host	Mouse
Theoretical MW (kDa)	77.4
Reactivity	Mouse
Specificity	This antibody reacts with both mouse Esrp-1 and Esrp-2 proteins. A BLAST analysis of the immunizing protein sequence shows 100% homology with Esrp-1 from mouse and a 91% sequence homology with Esrp-1 from human, pig, rat, opossum, horse, cattle, panda, dog, and chimpanzee. The binding epitope of this monoclonal antibody has not been mapped.
Form	Liquid
Recommend Usage	Western Blot (1:1000) The optimal working dilution should be determined by the end user.
Storage Buffer	In 20 mM KH ₂ PO ₄ , 150 mM NaCl, pH 7.2 (0.01% sodium azide)

Storage Instruction

Store at 4°C. For long term storage store at -20°C.
Aliquot to avoid repeated freezing and thawing.

Note

This product contains sodium azide: a POISONOUS AND HAZARDOUS SUBSTANCE which should be handled by trained staff only.

Applications

- Western Blot (Cell lysate)

Western blot analysis of 293T with Esrp1/Esrp2 monoclonal antibody, clone 23A7.C9 (Cat # MAB10272) at 1:1000 dilution.
Lane 1: GFP-transfected; Lane 2: Esrp-1 transfected; Lane 3: Esrp-2 transfected.

Gene Info — Esrp2

Entrez GeneID [77411](#)

Gene Name Esrp2

Gene Alias Rbm35b, 9530027K23Rik

Gene Description epithelial splicing regulatory protein 2

Gene Ontology [Hyperlink](#)

Other Designations OTTMUSP00000025731

Gene Info — Esrp1

Entrez GeneID [207920](#)

Gene Name Esrp1

Gene Alias Rbm35a, BC031468, A630065D16, RP23-322G9.1, 2210008M09Rik

Gene Description epithelial splicing regulatory protein 1

Gene Ontology [Hyperlink](#)

Other Designations -