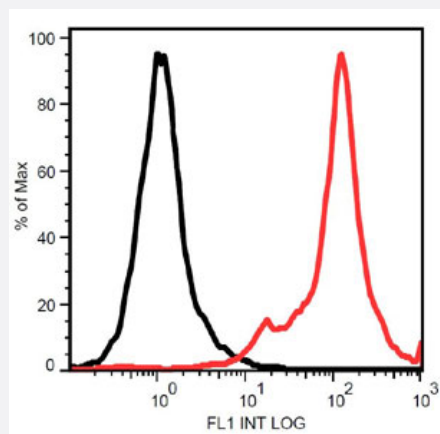


STRO-1 monoclonal antibody, clone STRO-1

Catalog # MAB10247 Size 100 ug

Applications



Flow Cytometry

Surface staining of KG-1a cells with STRO-1 monoclonal antibody, clone STRO-1 (Cat # MAB10247).

Specification

Product Description	Mouse monoclonal antibody raised against of STRO-1.
Immunogen	Human CD34 positive bone marrow cells.
Host	Mouse
Reactivity	Human
Specificity	The mouse monoclonal antibody STRO-1 recognizes the cell surface antigen STRO-1 expressed by bone marrow mesenchymal stromal cells and nucleated erythroid precursors, but not by committed hematopoietic progenitors.
Form	Liquid
Purification	Precipitation methods and ion exchange chromatography
Isotype	IgM
Recommend Usage	The optimal working dilution should be determined by the end user.

Storage Buffer	In TBS, pH 8.0 (0.09% sodium azide)
Storage Instruction	Store at 4°C. Do not freeze.
Note	This product contains sodium azide: a POISONOUS AND HAZARDOUS SUBSTANCE which should be handled by trained staff only.

Applications

- Immunocytochemistry
- Flow Cytometry

Surface staining of KG-1a cells with STRO-1 monoclonal antibody, clone STRO-1 (Cat # MAB10247).