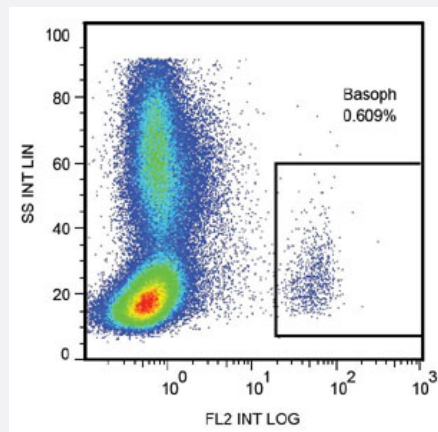


# LAMP1 monoclonal antibody, clone H4A3 (PE)

Catalog # MAB10237      Size 100 Reactions

## Applications



### Flow Cytometry

Surface staining of human peripheral blood cells with LAMP1 monoclonal antibody, clone H4A3 (PE) (Cat # MAB10237).

## Specification

Product Description	Mouse monoclonal antibody raised against of LAMP1.
Immunogen	Human PBMCs.
Host	Mouse
Theoretical MW (kDa)	100-120
Reactivity	Human, Mouse, Non-Human Primates
Specificity	LAMP1, a glycoprotein expressed mainly on lysosomal, but also on the plasma membrane.
Form	Liquid
Conjugation	PE
Purification	Size-exclusion chromatography purification
Isotype	IgG1

**Recommend Usage**

Flow Cytometry (4 uL reagent/100 uL of whole blood or  $10^6$  cells)  
The optimal working dilution should be determined by the end user.  
The content of a vial (0.4 mL) is sufficient for 100 tests.  
Intracellular and extracellular staining.

**Storage Buffer**

In PBS (0.2% BSA, 0.02% sodium azide)

**Storage Instruction**

Store at 4°C. Do not freeze.

**Note**

This product contains sodium azide: a POISONOUS AND HAZARDOUS SUBSTANCE which should be handled by trained staff only.

## Applications

- Flow Cytometry

Surface staining of human peripheral blood cells with LAMP1 monoclonal antibody, clone H4A3 (PE) (Cat # MAB10237).

## Gene Info — LAMP1

**Entrez GeneID**

[3916](#)

**Gene Name**

LAMP1

**Gene Alias**

CD107a, LAMPA, LGP120

**Gene Description**

lysosomal-associated membrane protein 1

**Omim ID**

[153330](#)

**Gene Ontology**

[Hyperlink](#)

**Gene Summary**

The protein encoded by this gene is a member of a family of membrane glycoproteins. This glycoprotein provides selectins with carbohydrate ligands. It may also play a role in tumor cell metastasis. [provided by RefSeq]

**Other Designations**

OTTHUMP00000040663

## Pathway

- [Lysosome](#)