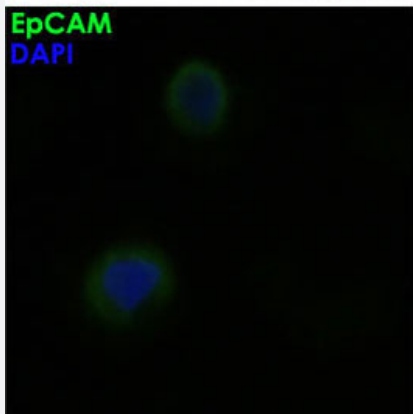
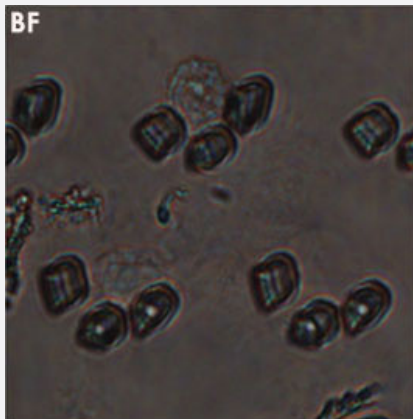


EPCAM monoclonal antibody, clone VU-1D9

Catalog # MAB10182 Size 100 ug

Applications



Immunofluorescence (Circulating Tumor Cell)

MCF-7 cells spiked whole blood sample flow through Captor®. Spiked MCF-7 cells were captured (Upper: Bright Field) and on-chip stained with EpCAM-FITC labeled monoclonal antibody (Lower: Green). The cell nucleus were counterstained with DAPI (Lower: Blue).

Specification

Product Description	Mouse monoclonal antibody raised against EPCAM.
Immunogen	Human small cell lung carcinoma cell line H69.
Host	Mouse
Reactivity	Human
Form	Liquid

Purification	Protein A purification
Isotype	IgG1
Recommend Usage	Flow Cytometry (1-3 ug/mL) Immunohistochemistry (Formalin/PFA-fixed paraffin-embedded sections) (5-10 ug/mL) Immunoprecipitation (1-2 ug/100-500 ug of protein in 1 mL lysate) Western Blot (1-4 ug/mL) Immunohistochemistry (Frozen sections) (4 ug/mL) Immunocytochemistry (4 ug/mL) The optimal working dilution should be determined by the end user.
Storage Buffer	In PBS, pH 7.4 (0.09% sodium azide)
Storage Instruction	Store at 4°C. Do not freeze.
Note	This product contains sodium azide: a POISONOUS AND HAZARDOUS SUBSTANCE which should be handled by trained staff only.

Applications

- Western Blot
- Immunohistochemistry
- Immunocytochemistry
- Immunoprecipitation
- Flow Cytometry
- Immunofluorescence (Circulating Tumor Cell)

MCF-7 cells spiked whole blood sample flow through Captor®. Spiked MCF-7 cells were captured (Upper: Bright Field) and on-chip stained with EpCAM-FITC labeled monoclonal antibody (Lower: Green). The cell nucleus were counterstained with DAPI (Lower: Blue).

Gene Info — EPCAM

Entrez GeneID	4072
Gene Name	EPCAM

Gene Alias	17-1A, 323/A3, CD326, CO-17A, CO17-1A, EGP, EGP-2, EGP34, EGP40, ESA, Ep-CAM, GA733-2, HEA125, KS1/4, KSA, M4S1, MH99, MIC18, MK-1, MOC31, TACST-1, TACSTD1, TROP1, hEGP-2
Gene Description	epithelial cell adhesion molecule
Omim ID	185535
Gene Ontology	Hyperlink
Gene Summary	<p>This gene encodes a carcinoma-associated antigen and is a member of a family that includes at least two type I membrane proteins. This antigen is expressed on most normal epithelial cells and gastrointestinal carcinomas and functions as a homotypic calcium-independent cell adhesion molecule. The antigen is being used as a target for immunotherapy treatment of human carcinomas. Mutations in this gene result in congenital tufting enteropathy. [provided by RefSeq]</p>
Other Designations	adenocarcinoma-associated antigen carcinoma-associated antigen GA733-2 human epithelial glycoprotein-2 membrane component, chromosome 4, surface marker (35kD glycoprotein) tumor-associated calcium signal transducer 1

Disease

- [Genetic Predisposition to Disease](#)
- [Ovarian Neoplasms](#)