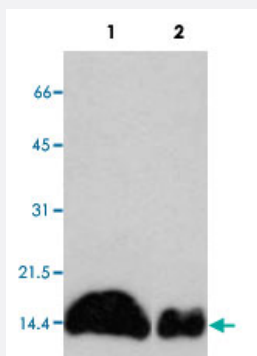


S100A11 monoclonal antibody, clone YK-1A4

Catalog # MAB10144 Size 100 ug

Applications



Western Blot (Cell lysate)

Western blot analysis of cell extracts with S100A11 monoclonal antibody, clone YK-1A4 (Cat # MAB10144).

Lane 1, HeLa

Lane 2, SW480

Specification

Product Description Mouse monoclonal antibody raised against full length recombinant S100A11.

Immunogen Recombinant protein corresponding to full length human S100A11.

Host Mouse

Reactivity Human

Form Liquid

Purification Protein A purification

Concentration 1 mg/mL

Isotype IgG1

Recommend Usage Western Blot (0.5-1 ug/mL)
The optimal working dilution should be determined by the end user.

Storage Buffer In 20 mM PBS, pH7.5, 300 mM NaCl (50% glycerol)

Storage Instruction

Store at -20°C.
Aliquot to avoid repeated freezing and thawing.

Applications

- Western Blot (Cell lysate)

Western blot analysis of cell extracts with S100A11 monoclonal antibody, clone YK-1A4 (Cat # MAB10144).

Lane 1, HeLa

Lane 2, SW480

- Sandwich ELISA

Gene Info — S100A11

Entrez GeneID [6282](#)

Gene Name S100A11

Gene Alias MLN70, S100C

Gene Description S100 calcium binding protein A11

Omim ID [603114](#)

Gene Ontology [Hyperlink](#)

Gene Summary The protein encoded by this gene is a member of the S100 family of proteins containing 2 EF-hand calcium-binding motifs. S100 proteins are localized in the cytoplasm and/or nucleus of a wide range of cells, and involved in the regulation of a number of cellular processes such as cell cycle progression and differentiation. S100 genes include at least 13 members which are located as a cluster on chromosome 1q21. This protein may function in motility, invasion, and tubulin polymerization. Chromosomal rearrangements and altered expression of this gene have been implicated in tumor metastasis. [provided by RefSeq]

Other Designations OTTHUMP00000015271|S100 calcium-binding protein A11 (calgizzarin)|calgizzarin

Disease

- [Tobacco Use Disorder](#)