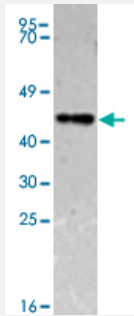


# GST monoclonal antibody, clone 100gt

Catalog # MAB10139      Size 100 ug

## Applications



### Western Blot (Transfected lysate)

Western Blot analysis of GST expression in transfected 293T cell line with GST monoclonal antibody, clone 100gt (Cat # MAB10139).

## Specification

<b>Product Description</b>	Mouse monoclonal antibody raised against synthetic peptide of GST.
<b>Immunogen</b>	A synthetic peptide corresponding to <i>Schistosoma japonicum</i> GST.
<b>Host</b>	Mouse
<b>Form</b>	Liquid
<b>Purification</b>	Protein A purification
<b>Isotype</b>	IgG1
<b>Recommend Usage</b>	The optimal working dilution should be determined by the end user.
<b>Storage Buffer</b>	In PBS
<b>Storage Instruction</b>	Store at 4°C. For long term storage store at -20°C. Aliquot to avoid repeated freezing and thawing.

## Applications

- Western Blot (Transfected lysate)

Western Blot analysis of GST expression in transfected 293T cell line with GST monoclonal antibody, clone 100gt (Cat # MAB10139).

- Immunofluorescence

- Immunoprecipitation

- Enzyme-linked Immunoabsorbent Assay