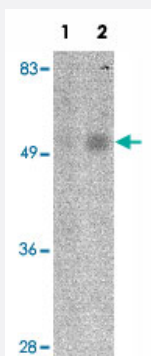


ORAI1 monoclonal antibody, clone 6D11A11

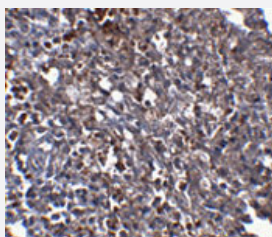
Catalog # MAB10004 Size 100 ug

Applications



Western Blot (Tissue lysate)

Western blot analysis of ORAI1 in human spleen tissue lysate with ORAI1 monoclonal antibody, clone 6D11A11 (Cat # MAB10004) at (1) 1 and (2) 2 ug/mL.



Immunohistochemistry

Immunohistochemistry of human spleen tissue with ORAI1 monoclonal antibody, clone 6D11A11 (Cat # MAB10004) at 2.5 ug/mL.

Specification

Product Description	Mouse monoclonal antibody raised against synthetic peptide of ORAI1.
Immunogen	A synthetic peptide corresponding to 16 amino acids at C-terminus of human ORAI1.
Host	Mouse
Reactivity	Human, Mouse, Rat
Form	Liquid
Purification	IgG purification

Recommend Usage	Western blot (1-2 ug/mL) The optimal working dilution should be determined by the end user.
Storage Buffer	In PBS (0.02% sodium azide)
Storage Instruction	Store at 4°C for three months. For long term storage store at -20°C. Aliquot to avoid repeated freezing and thawing.
Note	This product contains sodium azide: a POISONOUS AND HAZARDOUS SUBSTANCE which should be handled by trained staff only.

Applications

- Western Blot (Tissue lysate)

Western blot analysis of ORAI1 in human spleen tissue lysate with ORAI1 monoclonal antibody, clone 6D11A11 (Cat # MAB10004) at (1) 1 and (2) 2 ug/mL.

- Immunohistochemistry

Immunohistochemistry of human spleen tissue with ORAI1 monoclonal antibody, clone 6D11A11 (Cat # MAB10004) at 2.5 ug/mL.

- Enzyme-linked Immunoabsorbent Assay

Gene Info — ORAI1

Entrez GeneID	84876
Gene Name	ORAI1
Gene Alias	CRACM1, FLJ14466, ORAT1, TMEM142A
Gene Description	ORAI calcium release-activated calcium modulator 1
Omim ID	610277
Gene Ontology	Hyperlink
Gene Summary	CRACM1 is a plasma membrane protein essential for store-operated calcium entry (Vig et al., 2006 [PubMed 16645049]).[supplied by OMIM]
Other Designations	calcium release-activated calcium channel protein 1 calcium release-activated calcium modulator 1 transmembrane protein 142A