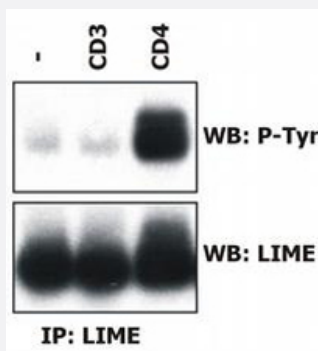


LIME1 monoclonal antibody, clone LIME-06

Catalog # MAB0960

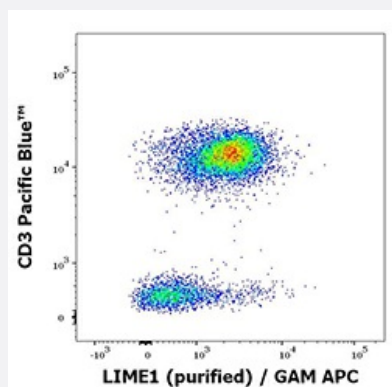
Size 100 ug

Applications



Immunoprecipitation

Induction of LIME1 tyrosine phosphorylation. Peripheral blood T cells were left unstimulated (-) or stimulated with anti-human CD3 (MEM-92) or anti-human CD4 (MEM-16), and LIME1 was immunoprecipitated from laurylmaltoside lysates with the LIME1 monoclonal antibody, clone LIME-06 (Cat # MAB0960) (immunoaffinity sorbent) and analyzed by Western blotting to visualize tyrosine-phosphorylated LIME1 (top) and total LIME1 (bottom).



Flow Cytometry

Flow cytometry multicolor intracellular staining of human peripheral whole blood stained using anti-LIME1 (LIME-06) purified antibody (concentration in sample 9 ug/mL, GAM APC) and anti-human CD3 (UCHT1) Pacific Blue™ antibody (20 uL reagent / 100 uL of peripheral whole blood).

Specification

Product Description	Mouse monoclonal antibody raised against partial recombinant LIME1.
Immunogen	Recombinant protein corresponding to amino acids 141-295 of human LIME1.
Host	Mouse
Theoretical MW (kDa)	31
Reactivity	Human

Specificity	This antibody was raised against intracellular fragment corresponding to aa 141-295 of human LIME, a 31 KDa Lck-interacting transmembrane adaptor expressed by T cells.
Form	Liquid
Isotype	IgG1
Recommend Usage	The optimal working dilution should be determined by the end user.
Storage Buffer	In PBS, pH 7.4 (0.09% sodium azide)
Storage Instruction	Store at 4°C. Do not freeze. Aliquot to avoid repeated freezing and thawing.
Note	This product contains sodium azide: a POISONOUS AND HAZARDOUS SUBSTANCE which should be handled by trained staff only.

Applications

- Immunoprecipitation

Induction of LIME1 tyrosine phosphorylation. Peripheral blood T cells were left unstimulated (-) or stimulated with anti-human CD3 (MEM-92) or anti-human CD4 (MEM-16), and LIME1 was immunoprecipitated from laurylmaltoside lysates with the LIME1 monoclonal antibody, clone LIME-06 (Cat # MAB0960) (immunoaffinity sorbent) and analyzed by Western blotting to visualize tyrosine-phosphorylated LIME1 (top) and total LIME1 (bottom).

- Flow Cytometry

Flow cytometry multicolor intracellular staining of human peripheral whole blood stained using anti-LIME1 (LIME-06) purified antibody (concentration in sample 9 ug/mL, GAM APC) and anti-human CD3 (UCHT1) Pacific Blue™ antibody (20 uL reagent / 100 uL of peripheral whole blood).

Gene Info — LIME1

Entrez GeneID	54923
Gene Name	LIME1
Gene Alias	FLJ20406, LIME, LP8067, dJ583P15.4
Gene Description	Lck interacting transmembrane adaptor 1
Omim ID	609809
Gene Ontology	Hyperlink

Gene Summary

LIME1 is a raft-associated transmembrane adaptor phosphoprotein that is preferentially expressed in hemopoietic cells, particularly T cells (Brdickova et al., 2003 [PubMed 14610046]; Hur et al., 2003 [PubMed 14610044]).[supplied by OMIM]

Other Designations

OTTHUMP00000031598