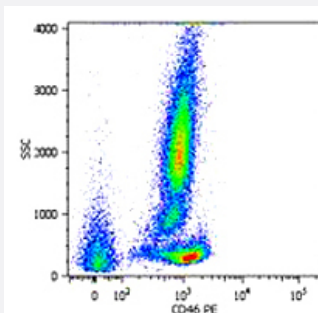


CD46 monoclonal antibody, clone MEM-258

Catalog # MAB0930

Size 100 ug

Applications



Flow Cytometry

Surface staining of human peripheral blood cells with CD46 monoclonal antibody, clone MEM - 258 (Cat # MAB0930) PE.

Specification

Product Description	Mouse monoclonal antibody raised against native CD46.
Immunogen	Native purified CD46 from human T cell line HPB-ALL.
Host	Mouse
Reactivity	Bovine, Human
Specificity	This antibody recognizes an epitope on SCR4 (the membrane-proximal SCR) domain of CD46 (Membrane cofactor protein).
Form	Liquid
Concentration	1 mg/mL
Isotype	IgG1
Recommend Usage	The optimal working dilution should be determined by the end user.
Storage Buffer	In TBS, pH 8.0 (0.09% sodium azide)
Storage Instruction	Store at 4°C. Do not freeze.

Note

This product contains sodium azide: a POISONOUS AND HAZARDOUS SUBSTANCE which should be handled by trained staff only.

Applications

- Western Blot
- Immunoprecipitation
- Flow Cytometry

Surface staining of human peripheral blood cells with CD46 monoclonal antibody, clone MEM - 258 (Cat # MAB0930) PE.

Gene Info — CD46

Entrez GeneID [4179](#)

Gene Name CD46

Gene Alias MCP, MGC26544, MIC10, TLX, TRA2.10

Gene Description CD46 molecule, complement regulatory protein

Omim ID [120920 235400](#)

Gene Ontology [Hyperlink](#)

Gene Summary The protein encoded by this gene is a type I membrane protein and is a regulatory part of the complement system. The encoded protein has cofactor activity for inactivation of complement components C3b and C4b by serum factor I, which protects the host cell from damage by complement. In addition, the encoded protein can act as a receptor for the Edmonston strain of measles virus, human herpesvirus-6, and type IV pili of pathogenic Neisseria. Finally, the protein encoded by this gene may be involved in the fusion of the spermatozoa with the oocyte during fertilization. This gene is found in a cluster on chromosome 1q32 with other genes encoding structural components of the complement system. At least fourteen different transcript variants encoding fourteen different isoforms have been found for this gene. [provided by RefSeq]

Other Designations CD46 antigen, complement regulatory protein|OTTHUMP00000034577|OTTHUMP00000034622|OTTHUMP00000034623|OTTHUMP00000034624|OTTHUMP00000034625|OTTHUMP00000034626|OTTHUMP00000034706|antigen identified by monoclonal antibody TRA-2-10|complement membrane cofactor

Publication Reference

- [Construction and Evaluation of Novel Rhesus Monkey Adenovirus Vaccine Vectors.](#)

Abbink P, Maxfield LF.

Journal of Virology 2015 Feb; 89(3):1512.

Application: Flow Cyt, Human, A549 cells

Pathway

- [Complement and coagulation cascades](#)

Disease

- [Abortion](#)
- [Birth Weight](#)
- [Genetic Predisposition to Disease](#)
- [Glioblastoma](#)
- [Glioma](#)
- [Hemolytic-Uremic Syndrome](#)
- [Leukemia](#)
- [Lymphoma](#)
- [Macular Degeneration](#)
- [Meningeal Neoplasms](#)
- [Meningioma](#)
- [Recurrence](#)