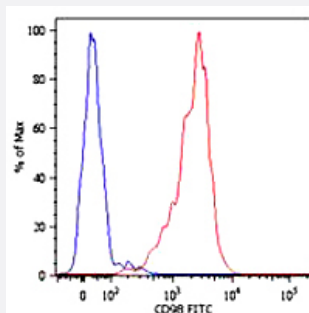


SLC3A2 monoclonal antibody, clone MEM-108

Catalog # MAB0911 Size 100 ug

Applications



Flow Cytometry

Surface staining of human peripheral blood cells with SLC3A2 monoclonal antibody, clone MEM - 108 (Cat # MAB0911) FITC. Cells in the monocyte gate were used for analysis.

Specification

Product Description	Mouse monoclonal antibody raised against native SLC3A2.
Immunogen	Native purified SLC3A2 from Raji human Burkitt's lymphoma cell line.
Host	Mouse
Reactivity	Human
Specificity	This antibody reacts with CD98. CD98 is expressed on T lymphocytes (upon activation) and activated NK cells; it is also present at low levels on B lymphocytes, NK cells, monocytes and platelets.
Form	Liquid
Isotype	IgG1
Recommend Usage	The optimal working dilution should be determined by the end user.
Storage Buffer	In PBS, pH 7.4 (0.09% sodium azide)
Storage Instruction	Store at 4°C. Do not freeze. Aliquot to avoid repeated freezing and thawing.

Note

This product contains sodium azide: a POISONOUS AND HAZARDOUS SUBSTANCE which should be handled by trained staff only.

Applications

- Immunoprecipitation
- Flow Cytometry

Surface staining of human peripheral blood cells with SLC3A2 monoclonal antibody, clone MEM - 108 (Cat # MAB0911) FITC. Cells in the monocyte gate were used for analysis.

Gene Info — SLC3A2

Entrez GeneID [6520](#)

Gene Name SLC3A2

Gene Alias 4F2, 4F2HC, 4T2HC, CD98, CD98HC, MDU1, NACAE

Gene Description solute carrier family 3 (activators of dibasic and neutral amino acid transport), member 2

Omim ID [158070](#)

Gene Ontology [Hyperlink](#)

Gene Summary This gene is a member of the solute carrier family and encodes a cell surface, transmembrane protein with an alpha amylase domain. The protein exists as the heavy chain of a heterodimer, covalently bound through di-sulfide bonds to one of several possible light chains. It associates with integrins and mediates integrin-dependent signaling related to normal cell growth and tumorigenesis. Alternate transcriptional splice variants, encoding different isoforms, have been characterized. [provided by RefSeq]

Other Designations 4F2 cell-surface antigen heavy chain|4F2 heavy chain|CD98 heavy chain|antigen defined by monoclonal antibody 4F2, heavy chain|antigen identified by monoclonal antibodies 4F2, TRA1.10, TROP4, and T43|heavy chain|lymphocyte activation antigen 4F2 large subu

Disease

- [Cardiovascular Diseases](#)
- [Diabetes Mellitus](#)
- [Edema](#)

- [Lymphoma](#)
- [Multiple Myeloma](#)