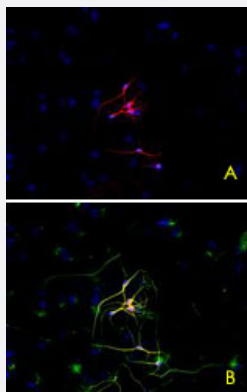


TUBB3 monoclonal antibody, clone TU-20

Catalog # MAB0907

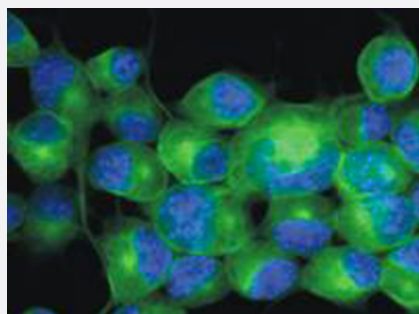
Size 100 ug

Applications



Immunocytochemistry

Immunofluorescence staining of P-19 mouse embryonal carcinoma cell line stimulated to neuronal differentiation by retinoic acid. A : Microtubules decorated with TUBB3 monoclonal antibody, clone TU - 20 (Cat # MAB0907) (red). B : Merged image of co - staining with TUBB3 monoclonal antibody (TU - 06 ; green). Superposition of red and green colours provided yellow staining. Nuclei were stained with DNA - binding dye (blue).



Immunocytochemistry

Immunofluorescence staining of Neuro 2a mouse neuroblastoma cell line using TUBB3 monoclonal antibody, clone TU - 20 (Cat # MAB0907 ; green) , 3 ug / ml. Nuclei were stained with DAPI (blue) .

Specification

Product Description	Mouse monoclonal antibody raised against synthetic peptide of TUBB3.
Immunogen	A synthetic peptide (conjugated with KLH) corresponding to amino acids 441-448 of human TUBB3.
Sequence	ESESQGPK
Host	Mouse
Reactivity	Human
Specificity	This antibody recognizes neuron-specific human betaIII-tubulin.

Form	Liquid
Isotype	IgG1
Recommend Usage	The optimal working dilution should be determined by the end user.
Storage Buffer	In PBS, pH 7.4 (0.09% sodium azide)
Storage Instruction	Store at 4°C. Do not freeze. Aliquot to avoid repeated freezing and thawing.
Note	This product contains sodium azide: a POISONOUS AND HAZARDOUS SUBSTANCE which should be handled by trained staff only.

Applications

- Western Blot
- Immunohistochemistry (Formalin/PFA-fixed paraffin-embedded sections)
- Immunocytochemistry

Immunofluorescence staining of P-19 mouse embryonal carcinoma cell line stimulated to neuronal differentiation by retinoic acid. A : Microtubules decorated with TUBB3 monoclonal antibody, clone TU - 20 (Cat # MAB0907) (red). B : Merged image of co - staining with TUBB3 monoclonal antibody (TU - 06 ; green). Superposition of red and green colours provided yellow staining. Nuclei were stained with DNA - binding dye (blue).

- Immunocytochemistry

Immunofluorescence staining of Neuro 2a mouse neuroblastoma cell line using TUBB3 monoclonal antibody, clone TU - 20 (Cat # MAB0907 ; green) , 3 ug / ml. Nuclei were stained with DAPI (blue) .

Gene Info — TUBB3

Entrez GeneID	10381
Gene Name	TUBB3
Gene Alias	MC1R, TUBB4, beta-4
Gene Description	tubulin, beta 3
Omim ID	602661
Gene Ontology	Hyperlink

Gene Summary

O

Other Designations

tubulin, beta, 4

Pathway

- [Gap junction](#)
- [Pathogenic Escherichia coli infection - EHEC](#)