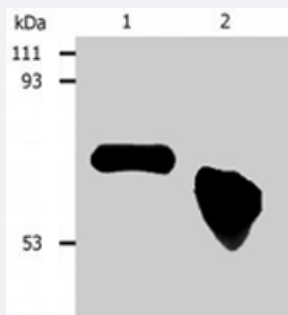


AFP monoclonal antibody, clone AFP-01

Catalog # MAB0906 Size 100 ug

Applications



Western Blot (Cell lysate)

Western blotting analysis of human AFP in HepG2 human hepatocellular carcinoma cell line. Lane 1 : Immunostaining with AFP monoclonal antibody, clone AFP - 01 (Cat # MAB0906) ; reducing conditions. Lane 2 : Immunostaining with AFP monoclonal antibody, clone AFP - 01 (Cat # MAB0906) ; non - reducing conditions.

Specification

Product Description	Mouse monoclonal antibody raised against native AFP.
Immunogen	Native purified human AFP.
Host	Mouse
Reactivity	Human
Form	Liquid
Isotype	IgG1
Recommend Usage	ELISA Western Blot (1-2 ug/mL) The optimal working dilution should be determined by the end user.
Storage Buffer	In PBS, pH 7.4 (0.09% sodium azide)
Storage Instruction	Store at 4°C. Do not freeze. Aliquot to avoid repeated freezing and thawing.
Note	This product contains sodium azide: a POISONOUS AND HAZARDOUS SUBSTANCE which should be handled by trained staff only.

Applications

- Western Blot (Cell lysate)

Western blotting analysis of human AFP in HepG2 human hepatocellular carcinoma cell line. Lane 1 : Immunostaining with AFP monoclonal antibody, clone AFP - 01 (Cat # MAB0906) ; reducing conditions. Lane 2 : Immunostaining with AFP monoclonal antibody, clone AFP - 01 (Cat # MAB0906) ; non - reducing conditions.

- Immunoprecipitation

- Enzyme-linked Immunoabsorbent Assay

Gene Info — AFP

Entrez GeneID [174](#)

Gene Name AFP

Gene Alias FETA, HPAFP

Gene Description alpha-fetoprotein

Omim ID [104150](#)

Gene Ontology [Hyperlink](#)

Gene Summary This gene encodes alpha-fetoprotein, a major plasma protein produced by the yolk sac and the liver during fetal life. Alpha-fetoprotein expression in adults is often associated with hepatoma or teratoma. However, hereditary persistence of alpha-fetoprotein may also be found in individuals with no obvious pathology. The protein is thought to be the fetal counterpart of serum albumin, and the alpha-fetoprotein and albumin genes are present in tandem in the same transcriptional orientation on chromosome 4. Alpha-fetoprotein is found in monomeric as well as dimeric and trimeric forms, and binds copper, nickel, fatty acids and bilirubin. The level of alpha-fetoprotein in amniotic fluid is used to measure renal loss of protein to screen for spina bifida and anencephaly. [provided by RefSeq]

Other Designations OTTHUMP00000160480|alpha-1-fetoprotein|alpha-fetoglobulin

Disease

- [Carcinoma](#)

- [Liver Cirrhosis](#)

- [Liver Neoplasms](#)