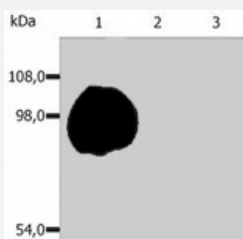


SPN monoclonal antibody, clone MEM-59

Catalog # MAB0884

Size 100 ug

Applications



Western Blot (Cell lysate)

Western blotting analysis (non - reducing conditions) of isolated peripheral blood lymphocytes of various species using SPN monoclonal antibody, clone MEM - 59 (Cat # MAB0884) . Lane 1 : Lysate of human PBL. Lane 2 : Lysate of canine PBL. Lane 3 : Lysate of porcine PBL.

Specification

| | |
|----------------------------|---|
| Product Description | Mouse monoclonal antibody raised against native SPN. |
| Immunogen | Native purified SPN from human T lymphocytes. |
| Host | Mouse |
| Reactivity | Human |
| Specificity | This antibody recognizes neuraminidase-sensitive epitope on CD43 (Leukosialin), CD43 is expressed by platelets and at high levels on the surface of all leukocytes; it is negative on resting B lymphocytes and erythrocytes. |
| Form | Liquid |
| Isotype | IgG1 |
| Recommend Usage | The optimal working dilution should be determined by the end user. |
| Storage Buffer | In PBS, pH 7.4 (0.09% sodium azide) |
| Storage Instruction | Store at 4°C. Do not freeze. Aliquot to avoid repeated freezing and thawing. |

Note

This product contains sodium azide: a POISONOUS AND HAZARDOUS SUBSTANCE which should be handled by trained staff only.

Applications

- Western Blot (Cell lysate)

Western blotting analysis (non - reducing conditions) of isolated peripheral blood lymphocytes of various species using SPN monoclonal antibody, clone MEM - 59 (Cat # MAB0884) . Lane 1 : Lysate of human PBL. Lane 2 : Lysate of canine PBL. Lane 3 : Lysate of porcine PBL.

- Immunohistochemistry (Formalin/PFA-fixed paraffin-embedded sections)

- Immunoprecipitation

- Flow Cytometry

Gene Info — SPN

| | |
|---------------|----------------------|
| Entrez GeneID | 6693 |
|---------------|----------------------|

| | |
|-----------|-----|
| Gene Name | SPN |
|-----------|-----|

| | |
|------------|-------------------|
| Gene Alias | CD43, GPL115, LSN |
|------------|-------------------|

| | |
|------------------|-------------|
| Gene Description | sialophorin |
|------------------|-------------|

| | |
|---------|------------------------|
| Omim ID | 182160 |
|---------|------------------------|

| | |
|---------------|---------------------------|
| Gene Ontology | Hyperlink |
|---------------|---------------------------|

| | |
|--------------|--|
| Gene Summary | Sialophorin (leukosialin) is a major sialoglycoprotein on the surface of human T lymphocytes, monocytes, granulocytes, and some B lymphocytes, which appears to be important for immune function and may be part of a physiologic ligand-receptor complex involved in T-cell activation.[supplied by OMIM] |
|--------------|--|

| | |
|--------------------|---|
| Other Designations | leukosialin sialophorin (gpL115, leukosialin, CD43) sialophorin (leukosialin, CD43) |
|--------------------|---|

Pathway

- [Cell adhesion molecules \(CAMs\)](#)

Disease

- [Kidney Failure](#)