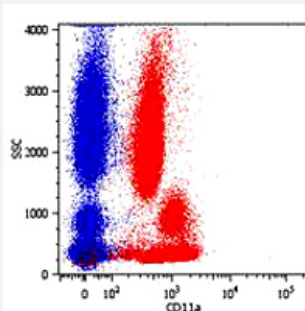


ITGAL monoclonal antibody, clone MEM-25

Catalog # MAB0876 Size 100 ug

Applications



Flow Cytometry

Surface staining of human peripheral blood cells with ITGAL monoclonal antibody, clone MEM - 25 (Cat # MAB0876) PE.

Specification

Product Description	Mouse monoclonal antibody raised against native ITGAL.
Immunogen	Native purified ITGAL from leukocytes of a patient suffering from a LGL-type leukemia.
Host	Mouse
Theoretical MW (kDa)	170-180
Reactivity	Human
Specificity	This antibody reacts with CD11a (alpha-subunit of human LFA-1), a 170-180 KDa type I transmembrane glycoprotein expressed on B and T lymphocytes, monocytes, macrophages, neutrophils, basophils and eosinophils.
Form	Liquid
Isotype	IgG1
Recommend Usage	The optimal working dilution should be determined by the end user.
Storage Buffer	In PBS, pH 7.4 (0.09% sodium azide)

Storage Instruction

Store at 4°C. Do not freeze.
Aliquot to avoid repeated freezing and thawing.

Note

This product contains sodium azide: a POISONOUS AND HAZARDOUS SUBSTANCE which should be handled by trained staff only.

Applications

- Immunoprecipitation

- Flow Cytometry

Surface staining of human peripheral blood cells with ITGAL monoclonal antibody, clone MEM - 25 (Cat # MAB0876) PE.

Gene Info — ITGAL

Entrez GeneID[3683](#)**Gene Name**

ITGAL

Gene Alias

CD11A, LFA-1, LFA1A

Gene Description

integrin, alpha L (antigen CD11A (p180), lymphocyte function-associated antigen 1; alpha polypeptide)

Omim ID[153370](#)**Gene Ontology**[Hyperlink](#)**Gene Summary**

ITGAL encodes the integrin alpha L chain. Integrins are heterodimeric integral membrane proteins composed of an alpha chain and a beta chain. This L-domain containing alpha integrin combines with the beta 2 chain (ITGB2) to form the integrin lymphocyte function-associated antigen-1 (LFA-1), which is expressed on all leukocytes. LFA-1 plays a central role in leukocyte intercellular adhesion through interactions with its ligands, ICAMs 1-3 (intercellular adhesion molecules 1 through 3), and also functions in lymphocyte costimulatory signaling. Two transcript variants encoding different isoforms have been found for this gene. [provided by RefSeq]

Other Designations

LFA-1 alpha|antigen CD11A (p180), lymphocyte function-associated antigen 1, alpha polypeptide|integrin alpha L|integrin gene promoter|lymphocyte function-associated antigen 1

Pathway

- [Cell adhesion molecules \(CAMs\)](#)

- [Leukocyte transendothelial migration](#)
- [Natural killer cell mediated cytotoxicity](#)
- [Regulation of actin cytoskeleton](#)

Disease

- [Cardiovascular Diseases](#)
- [Diabetes Mellitus](#)
- [Edema](#)
- [Genetic Predisposition to Disease](#)
- [Helicobacter Infections](#)
- [Stomach Ulcer](#)