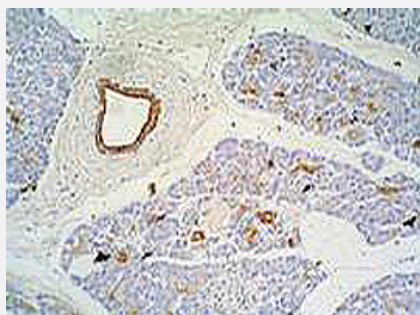


# KRT7/KRT17 monoclonal antibody, clone C-46

Catalog # MAB0859

Size 100 ug

## Applications



### Immunohistochemistry (Formalin/PFA-fixed paraffin-embedded sections)

Immunohistochemistry staining of human pancreas (paraffin - embedded sections) with KRT7/KRT17 monoclonal antibody, clone C - 46 (Cat # MAB0859) .

## Specification

<b>Product Description</b>	Mouse monoclonal antibody raised against native KRT7/KRT17.
<b>Immunogen</b>	Native purified KRT7/KRT17 from cytoskeleton of human HeLa cell line.
<b>Host</b>	Mouse
<b>Theoretical MW (kDa)</b>	54, 46
<b>Reactivity</b>	Bovine, Human, Pig
<b>Specificity</b>	This antibody reacts with Cytokeratin peptides 7 and 17 (54 and 46 KDa).
<b>Form</b>	Liquid
<b>Isotype</b>	IgG1
<b>Recommend Usage</b>	The optimal working dilution should be determined by the end user.
<b>Storage Buffer</b>	In PBS, pH 7.4 (0.09% sodium azide)
<b>Storage Instruction</b>	Store at 4°C. Do not freeze. Aliquot to avoid repeated freezing and thawing.

**Note**

This product contains sodium azide: a POISONOUS AND HAZARDOUS SUBSTANCE which should be handled by trained staff only.

## Applications

- Western Blot
- Immunohistochemistry (Formalin/PFA-fixed paraffin-embedded sections)

Immunohistochemistry staining of human pancreas (paraffin - embedded sections) with KRT7/KRT17 monoclonal antibody, clone C - 46 (Cat # MAB0859) .

- Immunocytochemistry
- Immunoprecipitation

## Gene Info — KRT7

**Entrez GeneID** [3855](#)

**Gene Name** KRT7

**Gene Alias** CK7, K2C7, K7, MGC129731, MGC3625, SCL

**Gene Description** keratin 7

**Omim ID** [148059](#)

**Gene Ontology** [Hyperlink](#)

**Gene Summary** The protein encoded by this gene is a member of the keratin gene family. The type II cytokeratins consist of basic or neutral proteins which are arranged in pairs of heterotypic keratin chains coexpressed during differentiation of simple and stratified epithelial tissues. This type II cytokeratin is specifically expressed in the simple epithelia lining the cavities of the internal organs and in the gland ducts and blood vessels. The genes encoding the type II cytokeratins are clustered in a region of chromosome 12q12-q13. Alternative splicing may result in several transcript variants; however, not all variants have been fully described. [provided by RefSeq]

**Other Designations** cytokeratin 7|keratin, 55K type II cytoskeletal|keratin, simple epithelial type I, K7|keratin, type II cytoskeletal 7|sarcolectin|type II mesothelial keratin K7

## Gene Info — KRT17

Entrez GeneID	<a href="#">3872</a>
Gene Name	KRT17
Gene Alias	K17, PC, PC2, PCHC1
Gene Description	keratin 17
Omim ID	<a href="#">148069</a> <a href="#">167210</a> <a href="#">184500</a>
Gene Ontology	<a href="#">Hyperlink</a>
Gene Summary	This gene encodes the type I intermediate filament chain keratin 17, expressed in nail bed, hair follicle, sebaceous glands, and other epidermal appendages. Mutations in this gene lead to Jackson-Lawler type pachyonychia congenita and steatocystoma multiplex. [provided by RefSeq]
Other Designations	cytokeratin-17