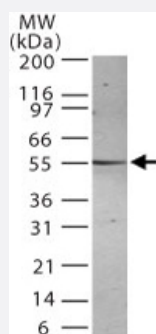


PSEN2 monoclonal antibody, clone 198C679.2.

Catalog # MAB0101

Size 200 uL

Applications



Western Blot (Cell lysate)

Western blot analysis for PSEN2. Using PSEN2 monoclonal antibody, clone 198C679.2. (Cat # MAB0101) at 1 : 500 against 30 ug/lane of HL-60 cell lysate. A protein band of approximate molecular weight of 55 KDa was detected.

Specification

Product Description	Mouse monoclonal antibody raised against synthetic peptide of PSEN2.
Immunogen	A synthetic peptide corresponding to amino acids of human PSEN2.
Host	Mouse
Reactivity	Human
Form	Liquid
Isotype	IgM
Recommend Usage	The optimal working dilution should be determined by the end user.
Storage Buffer	In tissue culture supernatant (0.05% sodium azide)
Storage Instruction	Store at 4°C. For long term storage store at -20°C. Aliquot to avoid repeated freezing and thawing.
Note	This product contains sodium azide: a POISONOUS AND HAZARDOUS SUBSTANCE which should be handled by trained staff only.

Applications

- Western Blot (Cell lysate)

Western blot analysis for PSEN2. Using PSEN2 monoclonal antibody, clone 198C679.2. (Cat # MAB0101) at 1 : 500 against 30 ug/lane of HL-60 cell lysate. A protein band of approximate molecular weight of 55 KDa was detected.

Gene Info — PSEN2

Entrez GeneID [5664](#)

Gene Name PSEN2

Gene Alias AD3L, AD4, PS2, STM2

Gene Description presenilin 2 (Alzheimer disease 4)

Omim ID [600759](#) [606889](#)

Gene Ontology [Hyperlink](#)

Gene Summary Alzheimer's disease (AD) patients with an inherited form of the disease carry mutations in the presenilin proteins (PSEN1 or PSEN2) or the amyloid precursor protein (APP). These disease-linked mutations result in increased production of the longer form of amyloid-beta (main component of amyloid deposits found in AD brains). Presenilins are postulated to regulate APP processing through their effects on gamma-secretase, an enzyme that cleaves APP. Also, it is thought that the presenilins are involved in the cleavage of the Notch receptor such that, they either directly regulate gamma-secretase activity, or themselves act as protease enzymes. Two alternatively spliced transcript variants encoding different isoforms of PSEN2 have been identified. [provided by RefSeq]

Other Designations Alzheimer's disease 3-like|OTTHUMP00000035671|presenilin 2

Pathway

- [Notch signaling pathway](#)

Disease

- [Alzheimer disease](#)
- [Amnesia](#)
- [Cardiovascular Diseases](#)
- [Cognition Disorders](#)

- [Dementia](#)
- [Diabetes Complications](#)
- [Diabetes Mellitus](#)
- [Edema](#)
- [Genetic Predisposition to Disease](#)
- [Macular Degeneration](#)
- [Metabolic Syndrome X](#)
- [Narcolepsy](#)
- [Neoplasms](#)
- [Neuropsychological Tests](#)
- [Osteoporosis](#)
- [Tourette Syndrome](#)