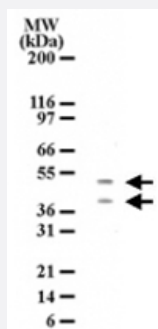


HTRA2 monoclonal antibody, clone 196C429

Catalog # MAB0099

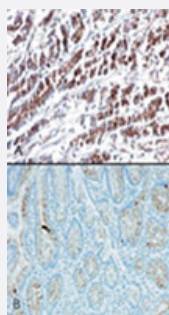
Size 100 ug

Applications



Western Blot (Cell lysate)

Western blot detection of HTRA2 in HL-60 cell lysate. Two protein bands of approximate molecular weight of 50 and 38 KDa were detected using HTRA2 monoclonal antibody, clone 196C429 (Cat # MAB0099) at 3 ug/mL dilution. The 50 KDa and 38 KDa bands may represent precursor and mature form of Omi.



Immunohistochemistry (Formalin/PFA-fixed paraffin-embedded sections)

IHC testing using HTRA2 monoclonal antibody, clone 196C429 (Cat # MAB0099) shows cytoplasmic staining in stomach tumor tissue (A) and very weak staining in normal stomach tissue (B) .

Specification

Product Description	Mouse monoclonal antibody raised against synthetic peptide of HTRA2.
Immunogen	A synthetic peptide corresponding to amino acids 335-350 of human HTRA2.
Host	Mouse
Reactivity	Human
Form	Liquid
Isotype	IgG1
Recommend Usage	The optimal working dilution should be determined by the end user.

Storage Buffer	In PBS (0.05% BSA, 0.05% sodium azide)
Storage Instruction	Store at 4°C. For long term storage store at -20°C. Aliquot to avoid repeated freezing and thawing.
Note	This product contains sodium azide: a POISONOUS AND HAZARDOUS SUBSTANCE which should be handled by trained staff only.

Applications

- Western Blot (Cell lysate)

Western blot detection of HTRA2 in HL-60 cell lysate. Two protein bands of approximate molecular weight of 50 and 38 KDa were detected using HTRA2 monoclonal antibody, clone 196C429 (Cat # MAB0099) at 3 ug/mL dilution. The 50 KDa and 38 KDa bands may represent precursor and mature form of Omi.

- Immunohistochemistry (Formalin/PFA-fixed paraffin-embedded sections)

IHC testing using HTRA2 monoclonal antibody, clone 196C429 (Cat # MAB0099) shows cytoplasmic staining in stomach tumor tissue (A) and very weak staining in normal stomach tissue (B).

Gene Info — HTRA2

Entrez GeneID	27429
Gene Name	HTRA2
Gene Alias	OMI, PARK13, PRSS25
Gene Description	HtrA serine peptidase 2
Omim ID	606441 610297
Gene Ontology	Hyperlink
Gene Summary	This gene encodes a serine protease. The protein has been localized in the endoplasmic reticulum and interacts with an alternatively spliced form of mitogen-activated protein kinase 14. The protein has also been localized to the mitochondria with release to the cytosol following apoptotic stimulus. The protein is thought to induce apoptosis by binding the apoptosis inhibitory protein baculoviral IAP repeat-containing 4. Nuclear localization of this protein has also been observed. Alternative splicing of this gene results in two transcript variants encoding different isoforms. Additional transcript variants have been described, but their full-length sequences have not been determined. [provided by RefSeq]
Other Designations	HtrA-like serine protease Omi stress-regulated endoprotease high temperature requirement protein A2 protease, serine, 25

Publication Reference

- [X-linked inhibitor of apoptosis \(XIAP\) protein protects against caspase activation and tissue loss after neonatal hypoxia-ischemia.](#)

Wang X, Zhu C, Wang X, Hagberg H, Korhonen L, Sandberg M, Lindholm D, Blomgren K.

Neurobiology of Disease 2004 Jun; 16(1):179.

- [Immunohistochemical analysis of Omi/HtrA2 expression in stomach cancer.](#)

Lee SH, Lee JW, Kim HS, Kim SY, Park WS, Kim SH, Lee JY, Yoo NJ.

APMIS 2003 May; 111(5):586.

Disease

- [Genetic Predisposition to Disease](#)
- [Parkinson disease](#)
- [Parkinsonian Disorders](#)