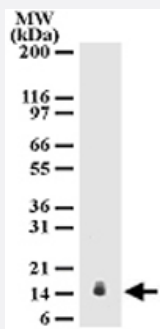


# IL25 monoclonal antibody, clone 68C1039.2

Catalog # MAB0090

Size 100 ug

## Applications



### Western Blot (Tissue lysate)

Western blot analysis of IL25 in mouse testis lysate. Using IL25 monoclonal antibody, clone 68C1039.2 (Cat # MAB0090). 10 ug of lysate was used per lane.

## Specification

<b>Product Description</b>	Mouse monoclonal antibody raised against synthetic peptide of IL25.
<b>Immunogen</b>	A synthetic peptide corresponding to amino acids 115-132 of human IL25.
<b>Host</b>	Mouse
<b>Reactivity</b>	Human, Mouse
<b>Form</b>	Liquid
<b>Purification</b>	Protein G purification
<b>Isotype</b>	IgG1
<b>Recommend Usage</b>	Western Blot (2-4 ug/mL) Immunohistochemistry (1:10-1:500) The optimal working dilution should be determined by the end user.
<b>Storage Buffer</b>	In PBS (0.05% sodium azide)
<b>Storage Instruction</b>	Store at 4°C. For long term storage store at -20°C. Aliquot to avoid repeated freezing and thawing.

**Note**

This product contains sodium azide: a POISONOUS AND HAZARDOUS SUBSTANCE which should be handled by trained staff only.

## Applications

- Western Blot (Tissue lysate)

Western blot analysis of IL25 in mouse testis lysate. Using IL25 monoclonal antibody, clone 68C1039.2 (Cat # MAB0090). 10 ug of lysate was used per lane.

- Immunohistochemistry (Formalin/PFA-fixed paraffin-embedded sections)

## Gene Info — IL25

Entrez GeneID	<a href="#">64806</a>
---------------	-----------------------

Gene Name	IL25
-----------	------

Gene Alias	IL-17E, IL-25, IL17E
------------	----------------------

Gene Description	interleukin 25
------------------	----------------

Omim ID	<a href="#">605658</a>
---------	------------------------

Gene Ontology	<a href="#">Hyperlink</a>
---------------	---------------------------

Gene Summary	The protein encoded by this gene is a cytokine that shares the sequence similarity with IL17. This cytokine can induce NF-kappaB activation, and stimulate the production of IL8. Both this cytokine and IL17B are ligands for the cytokine receptor IL17BR. Studies of the similar gene in mice suggested that this cytokine may be a proinflammatory cytokine favoring Th2-type immune response. Two alternatively spliced transcript variants of this gene encoding distinct isoforms have been reported. [provided by RefSeq]
--------------	-----------------------------------------------------------------------------------------------------------------------------------------------------------------------------------------------------------------------------------------------------------------------------------------------------------------------------------------------------------------------------------------------------------------------------------------------------------------------------------------------------------------------------------

Other Designations	interleukin 17E
--------------------	-----------------

## Pathway

- [Cytokine-cytokine receptor interaction](#)