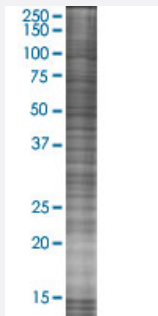


# 293T whole cell lysate (denatured)

Catalog # L151V1      Size 100 uL

## Applications



SDS-PAGE Gel

## Specification

<b>Product Description</b>	Whole cell lysate (denatured).
<b>Tissue</b>	Kidney
<b>Host</b>	Human
<b>Preparation Method</b>	Culture cells in 6-well plate to 80% confluent, remove media and then rinse with cold 1x PBS. Scrape cells off the plate surface and pipette cells into microcentrifuge tube to spin down the cells. Remove PBS and then lysis and resuspend cells with 205 ul 1X sample buffer. Mix well and heat at 90°C for 10 minutes, and then cooled rapidly.
<b>Lysis Buffer</b>	1X Sample Buffer (0.2 M Tris-HCl, 2% SDS, 10% glycerol, 0.2% 2-mercaptoethanol, 0.2% Bromophenol blue).
<b>Quality Control Testing</b>	12.5% SDS-PAGE Stained with Coomassie Blue. SDS-PAGE Gel
<b>Recommend Usage</b>	The lysate is ready to load on SDS-PAGE for Western blotting.
<b>Storage Buffer</b>	In ready-to-use 1X Sample Buffer (0.2 M Tris-HCl, 2% SDS, 10% glycerol, 0.2% 2-mercaptoethanol, 0.2% Bromophenol blue).
<b>Storage Instruction</b>	Store at -20°C or lower. Aliquot to avoid repeated freezing and thawing.

## Applications

- Western Blot

## Publication Reference

- [Autologous T cells expressing the oncogenic transcription factor KLF6-SV1 prevent apoptosis of chronic lymphocytic leukemia cells.](#)

Kokhaei P, Hojjat-Farsangi M, Mozaffari F, Moshfegh A, Pak F, Rashidy-Pour A, Palma M, Hansson L, Osterborg A, Mellstedt H.

PLoS One 2018 Feb; 13:1.

Application: qRT-PCR, Human, 293T cells